

2026 RESIDENCE BROCHURE

Grand Vue Apartments

Luxury apartments for rent in the heart of Olorien, framed by landscaped gardens and views of Mt. Meru and Mt. Kilimanjaro.

55 RESIDENCES

1-3 BEDROOMS

FURNISHED & UNFURNISHED

WHERE HEAVEN MEETS EARTH

A composed residential address for modern Arusha living.

Grand Vue brings together refined interiors, lush outdoor spaces and dependable amenities in one secure, central address.



AT A GLANCE

Everything a premium rental address should get right.

Elegant homes, practical services and leisure amenities designed around everyday comfort.


55
RESIDENCES

1-3
BEDROOMS

24/7
SECURITY

2
MOUNTAIN VIEWS



A savanna landscape at sunset. The sky is a gradient of orange and yellow, with a bright sun low on the horizon. In the foreground, there is tall, green grass. In the middle ground, several acacia trees are silhouetted against the sky. The overall mood is peaceful and scenic.

ARUSHA, TANZANIA

The safari capital,
the mountain
gateway, and a
remarkable place to
come home to.

Arusha sits within reach of Serengeti, Kilimanjaro, Mt. Meru and the Northern Circuit's most celebrated landscapes.

KILIMANJARO & THE
LAKES

Life in
Arusha is
shaped by
light,
altitude and
extraordinary
natural
beauty.

The region offers the rare
balance of urban convenience
and world-renowned scenery.
Grand Vue translates that setting
into a calm residential
environment with gardens,
views and generous outdoor
living.





PERFECTLY POSITIONED

Located in Olorien, Grand Vue places daily essentials, schools, restaurants, shopping, gyms, clubs and golf within convenient reach.

Central, green and connected.

PRIME RESIDENTIAL SETTING

EASY TOWN ACCESS

QUIET GARDEN ADDRESS

An aerial photograph of a modern, multi-story apartment building at dusk. The building is illuminated from within, showing warm yellow lights in the windows and balconies. The balconies have black metal railings. The building is surrounded by a paved parking area with several cars parked. There are palm trees and other greenery in the foreground and around the building. In the background, there are hills and a cloudy sky. The overall scene is a mix of urban architecture and natural elements.

THE DEVELOPMENT

Urban comfort, lush gardens and breathtaking scenery.

Grand Vue Apartments is a contemporary residential community in Olorien with ample parking, a swimming pool, gym, clubhouse, gardens and thoughtfully planned shared spaces.

A modern, multi-story residential building with a landscaped parking area. The building is light-colored with multiple balconies and large windows. The parking area is paved with reddish-brown bricks and features several cars parked. There are several tall palm trees and smaller plants in the landscaping. The sky is blue with some clouds, suggesting a clear day.

A REFINED ARRIVAL

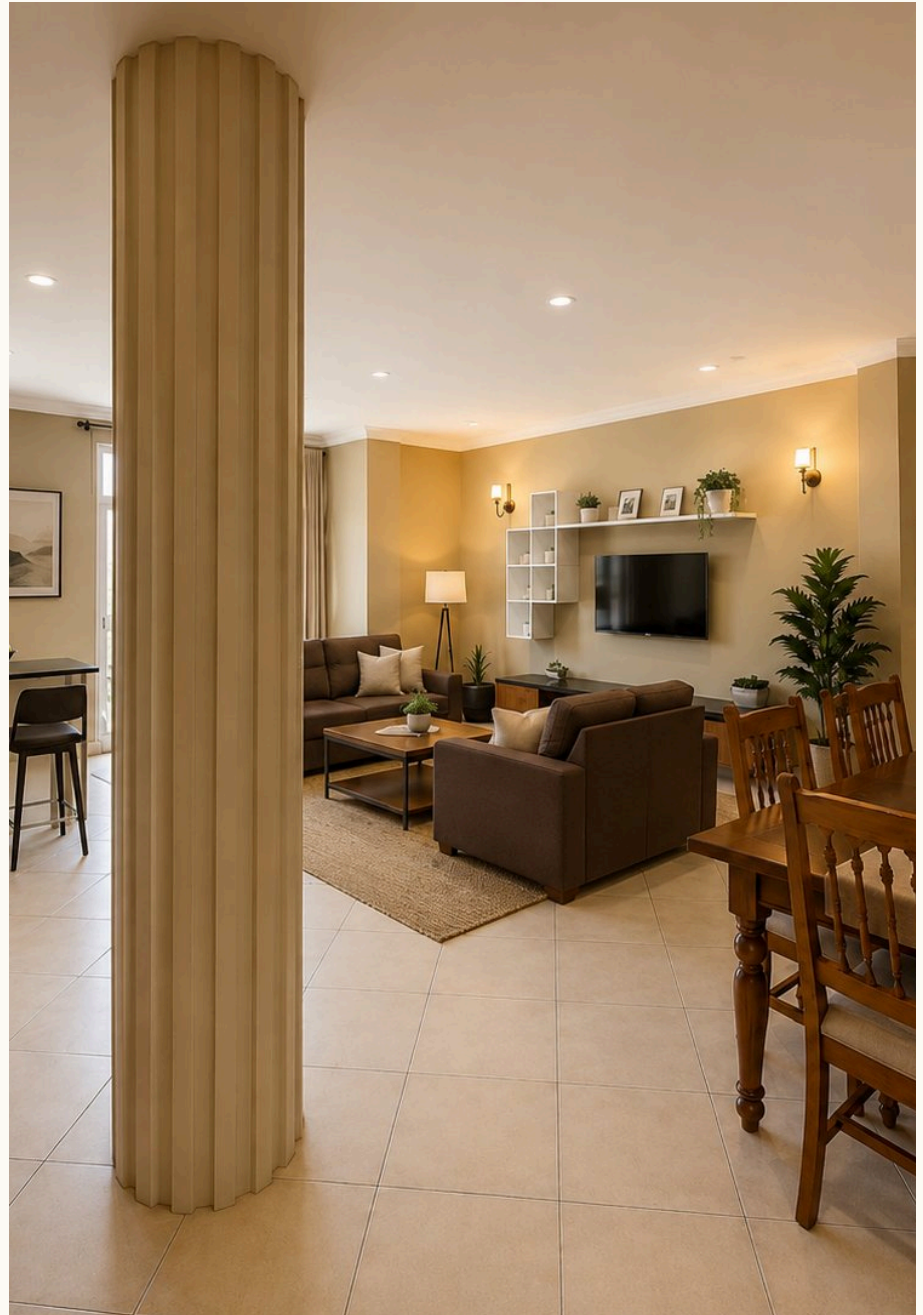
A secure,
landscaped
address with a
calm sense of
occasion.

DEVELOPMENT DESIGNER

Sandra de Kusserow

Sandra de Kusserow brings international experience and a sensitive understanding of African landscapes, lifestyles and cultures. Her work at Grand Vue balances contemporary living with character, proportion and a strong relationship to place.

sandradekusserow.com





INTERIORS

Warm,
practical and
deliberately
comfortable.

Open-plan living, generous windows, fitted kitchens, quality finishes and relaxed furnishing options create homes that feel ready from day one.



EVERYDAY EASE

Designed for real living.

Living, dining and
kitchen spaces flow
naturally, while
bedrooms and
balconies create room
to retreat.

FACILITIES & AMENITIES

The details that make a residence work.

Grand Vue combines lifestyle amenities with operational essentials, so everyday living feels easier, safer and better supported.

SWIMMING POOL

GYMNASIUM

CLUBHOUSE

PASSENGER LIFTS

BACK-UP GENERATOR

BOREHOLE WATER

24/7 SECURITY

SECURE PARKING

LANDSCAPED GARDENS

BALCONIES & TERRACES

GROHE FITTINGS

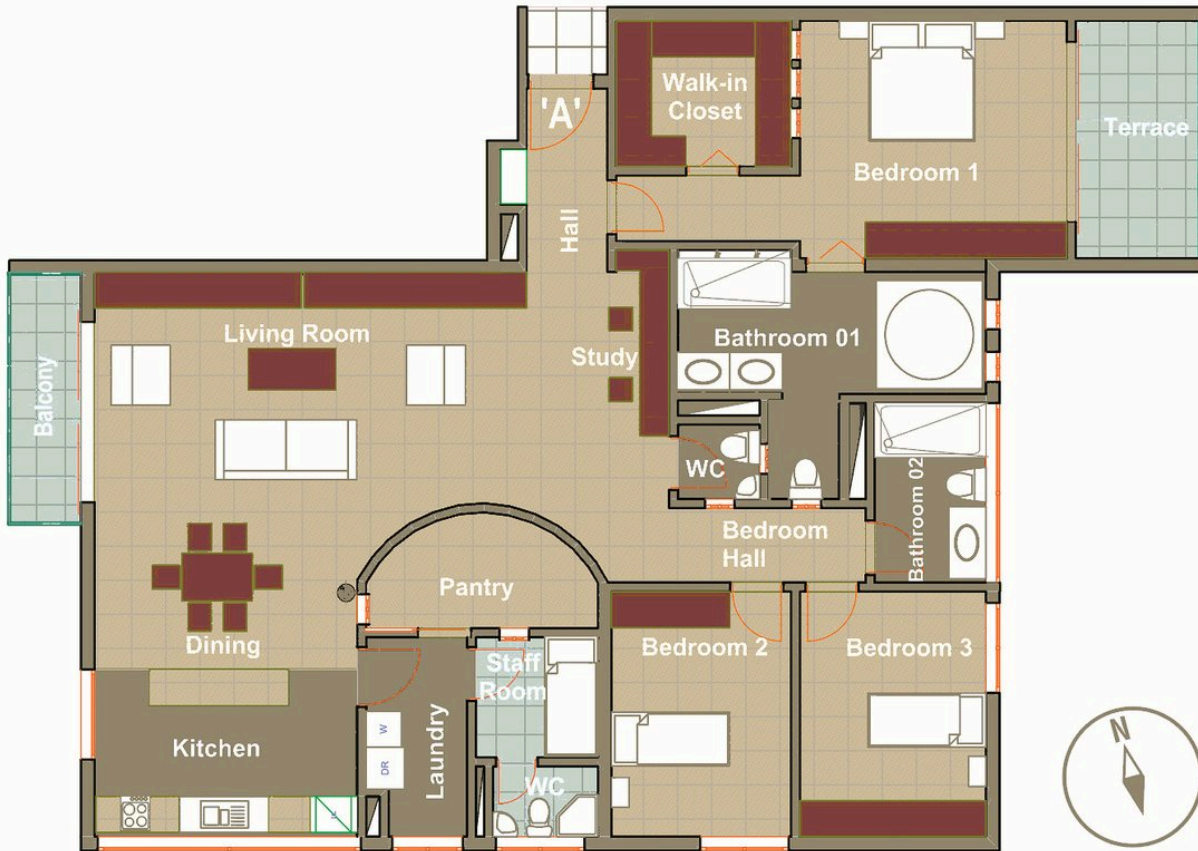
AZULEV TILES

Grand Vue master plan.



3 BEDROOM APARTMENT

Apartment 'A' A.01, A.02, A.03, A.04

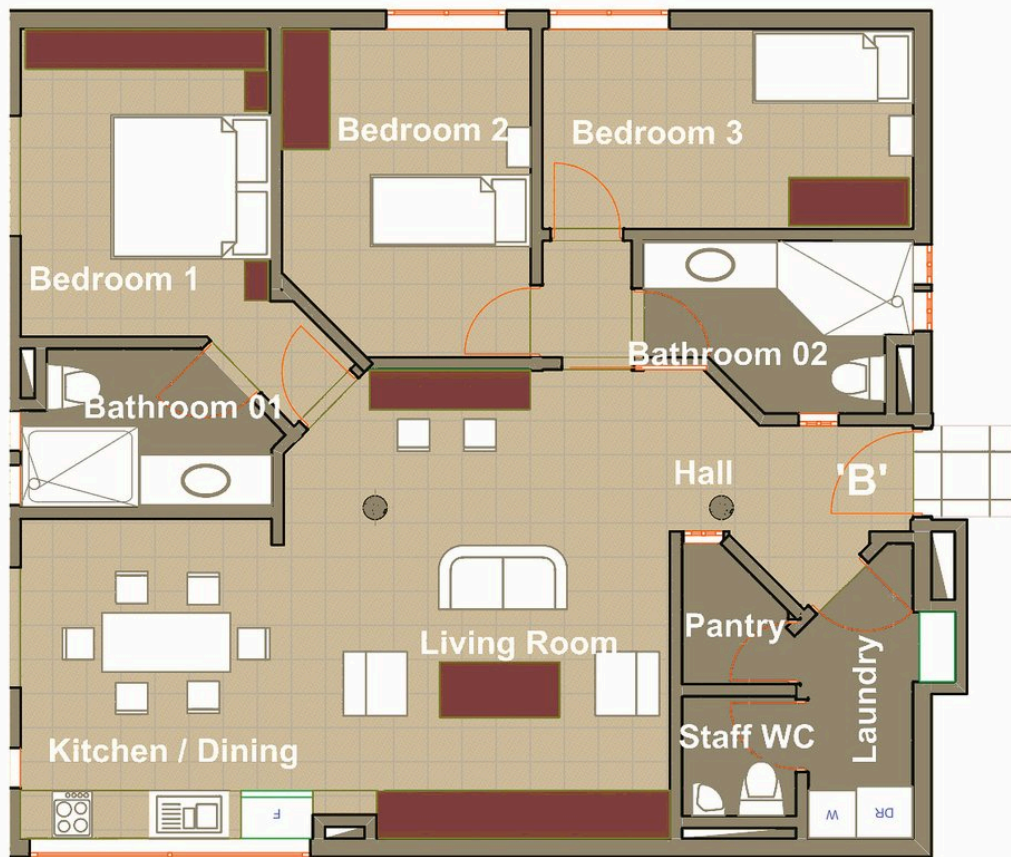


	M2
Hall	6.17
Study	10.2
Living Room	30.31
Dining	14.18
Kitchen	14.18
WC	3.02
pantry	6.99
Staff area	8.19
Laundry	8.99
Bedroom 1	24.25
Walk-in-closet	9.3
Bathroom 01	15.88
Bedroom 2	14.6
Bedroom 3	15.76
Bathroom 02	7.93
<hr/>	
Apartment - net area	189.95
Externals:	
Balcony	5.4
Terrace	9.8
<hr/>	
Apartment - Total area M2	205.15

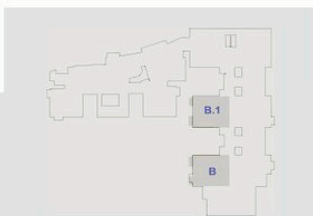


3 BEDROOM APARTMENT

Apartment 'B' B.01, B.02, B.03, B.04

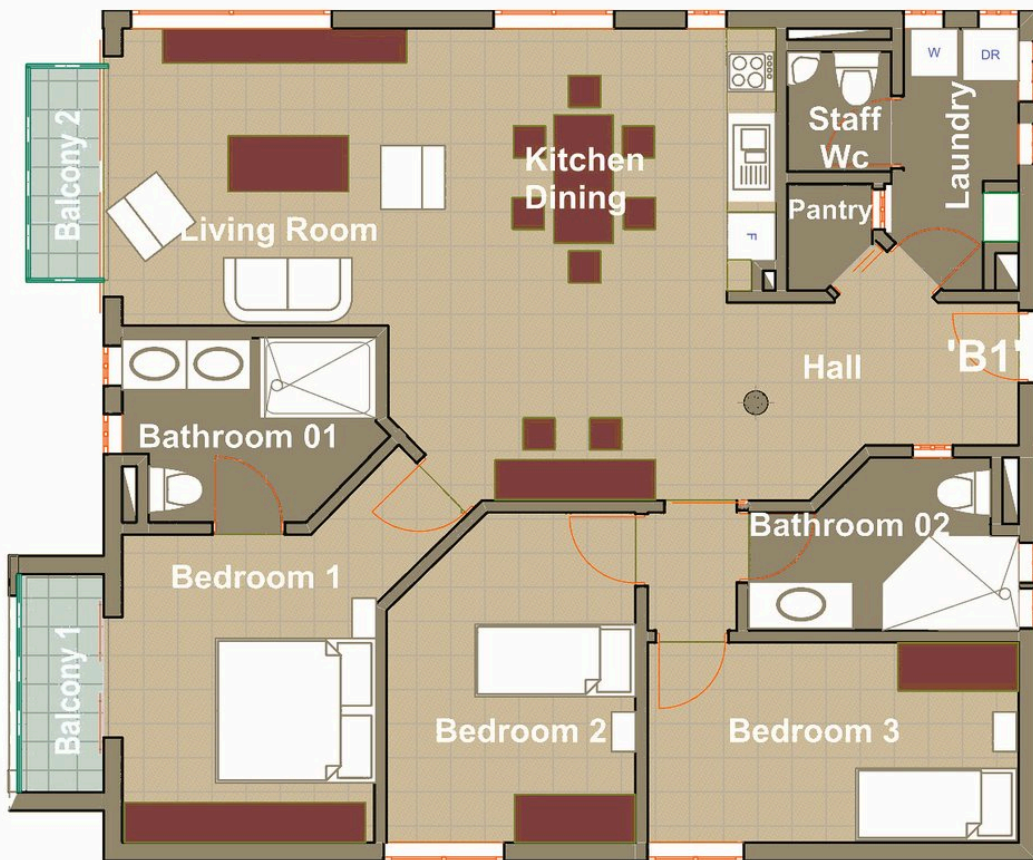


	M2
Hall & studio	14.41
Living Room	16.18
Dining/Kitchen	20.45
Laundry	7.92
Pantry	2.56
Staff WC	3.71
Bedroom 1	15.68
Bathroom 01	7.55
Bedroom 2	14.09
Bedroom 3	13.86
Bathroom 02	7.47
<hr/>	
Apartment - net area	123.88
Balcony 1	3
Balcony 2	2.72
<hr/>	
Apartment - Total area	129.6



3 BEDROOM APARTMENT

Apartment 'B1' B1.1, B1.2, B1.3, B1.4

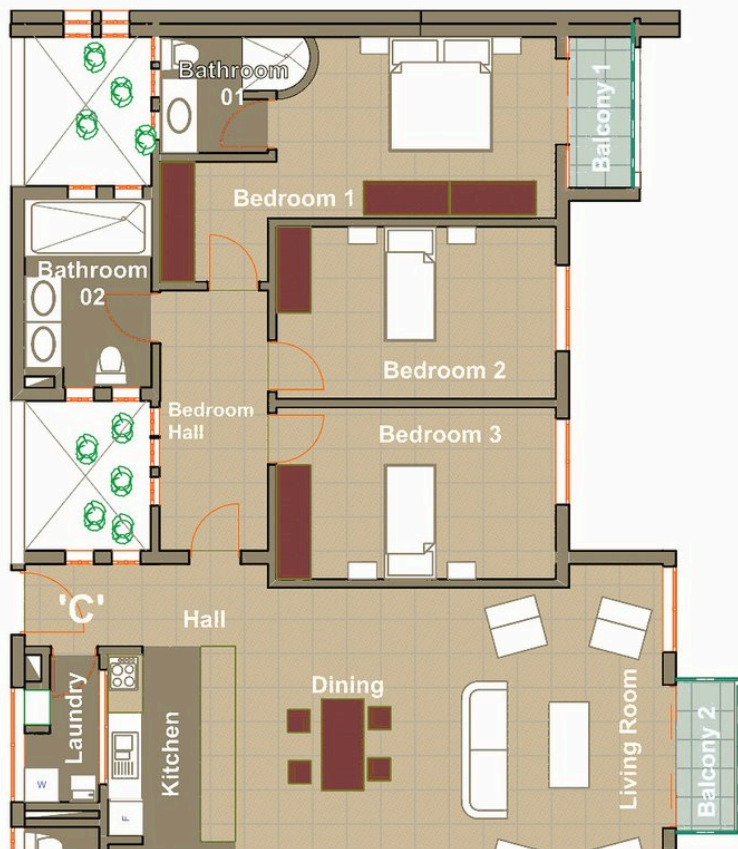


M2	
Entrance Hall & studio	15.22
Living Room	19.02
Dining/Kitchen	16.9
Laundry	6.09
Pantry	1.42
Staff WC	3.4
Bedroom 1	15.86
Bathroom 01	8.59
Bedroom 2	13.87
Bedroom 3	14.13
Bathroom 02	7.4
<hr/>	
Apartment - net area	121.97
Balcony 01	3
Balcony 02	2.72
<hr/>	
Apartment - Total area	127.69



3 BEDROOM APARTMENT

Apartment 'C' C.01, C.02, C.03, C.04



	M2
Hall	4.45
Living Room	27.11
Dining/Kitchen	29.13
Laundry	4.83
Wc	3.2
Bedroom 1	17.52
Bedroom 2	16.51
Bedroom 3	16.51
Bathroom 01	3.31
Bathroom 02	9.6
Bedroom Hall	8.98
<hr/>	
Apartment - net area	141.15
Externals:	
Balcony 1	2.98
Balcony 2	3
<hr/>	
Apartment - Total area	147.13

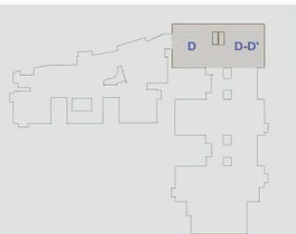


5 BEDROOM APARTMENT - LOWER FLOOR

Duplex 'D' D.01, D.02

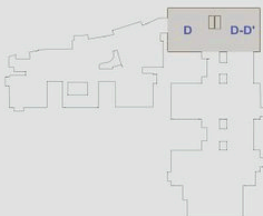


	M2
<i>Lower Floor</i>	
Hall	7.84
Living Room	51.76
Dining	15.67
Kitchen	15
Dobbie Laundry	4.19
Staff Room & WC	11.89
Wc	5.08
Bedroom 1	18.14
Bathroom 01	4.48
Stairway	8.22
<hr/>	
Lower floor - net area	142.27
Balcony 3.75	
Social Terrace 7.8	
Lower floor - Total area	153.82



5 BEDROOM APARTMENT - UPPER FLOOR

Duplex 'D' D.01, D.02



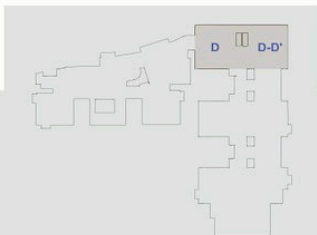
	M2
<i>Upper floor</i>	
Bedroom 2	18.7
Bathroom 02	11.62
Jacuzzi area	15.76
Walk -in-closet	8.56
Bedroom 3	14
Bathroom 03	7.9
Bedroom 4	13.71
Bathroom 04	6.58
Bedroom 5	15.85
Bathroom 05	6.64
Bedroom Hall	4.68
Study	20.13
Family room	19.01
Upper level - net area	163.14
Duplex 'D' - Total area	316.96

5 BEDROOM APARTMENT - LOWER FLOOR

Duplex 'D - D' (R. side) Duplex D - D-D.03, D-D.04



	M2
<i>Lower floor</i>	
Hall	7.84
Living Room	51.76
Dining	15.67
Kitchen	15.1
Laundry	4.19
Staff room & WC	11.89
WC	5.08
Bedroom 1	18.14
Bathroom 01	4.48
Stairway	8.22
<hr/>	
Lower floor - net area	142.37
Balcony 01	3.76
Social Terrace	9.93
<hr/>	
Lower floor - Total area	156.06

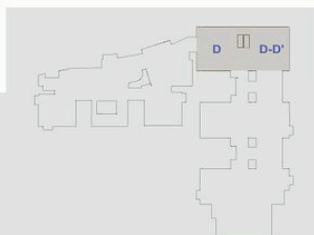


5 BEDROOM APARTMENT - UPPER FLOOR

Duplex 'D - D' (R. side) Duplex D - D-D.03, D-D.04

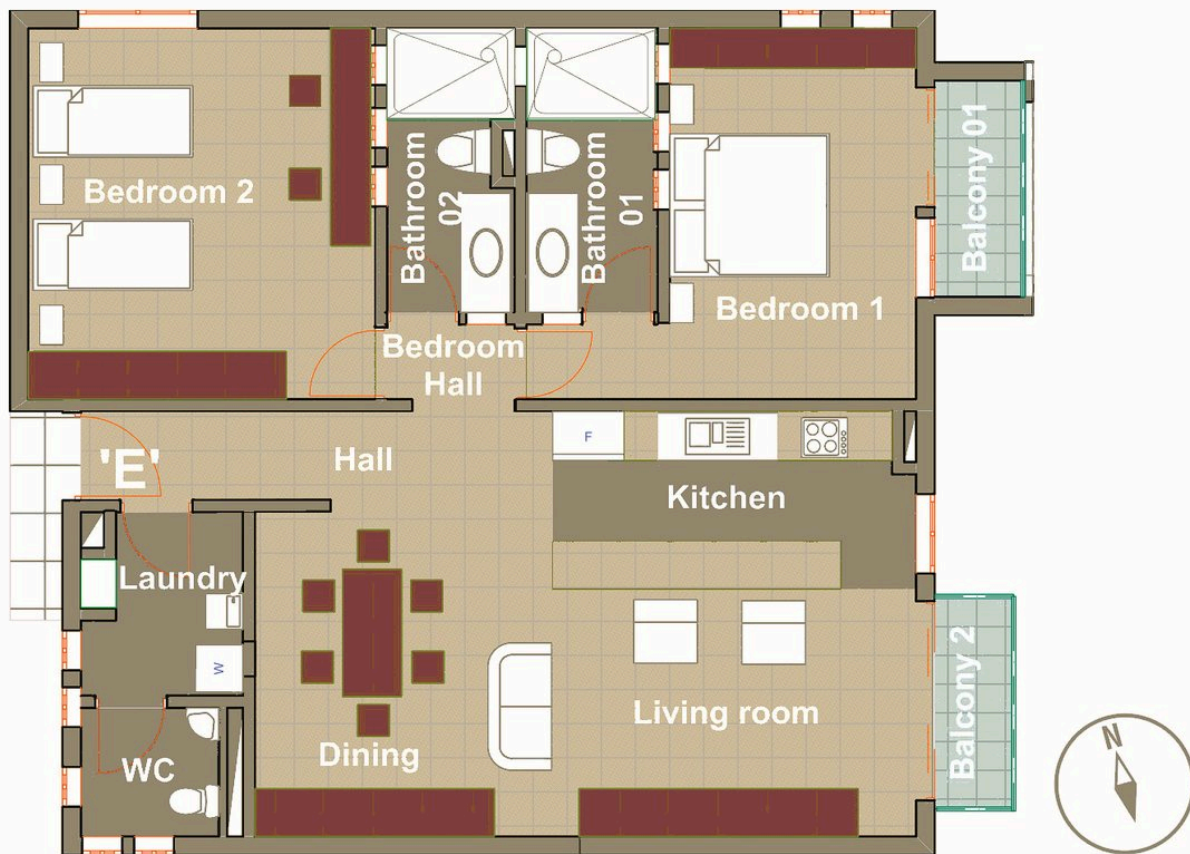


	M2
<i>Upper floor</i>	
Bedroom 2	17.62
Bathroom 02	11.01
Jacuzzi area	15.7
Walk -in-closet	7.95
Bedroom 3	13.13
Bedroom 4	16.15
Bathroom 03 (Shared by 3&4)	9.83
Bedroom 5	14.13
Bathroom 04	7.99
Bedroom Hall	6.33
Study	21.15
Family room	19.01
<hr/>	
Upper level - net area	160
<hr/>	
Duplex 'D-D' - Total area	316.06



2 BEDROOM APARTMENT

Apartment 'E' E.01, E.02, E.03, E.04

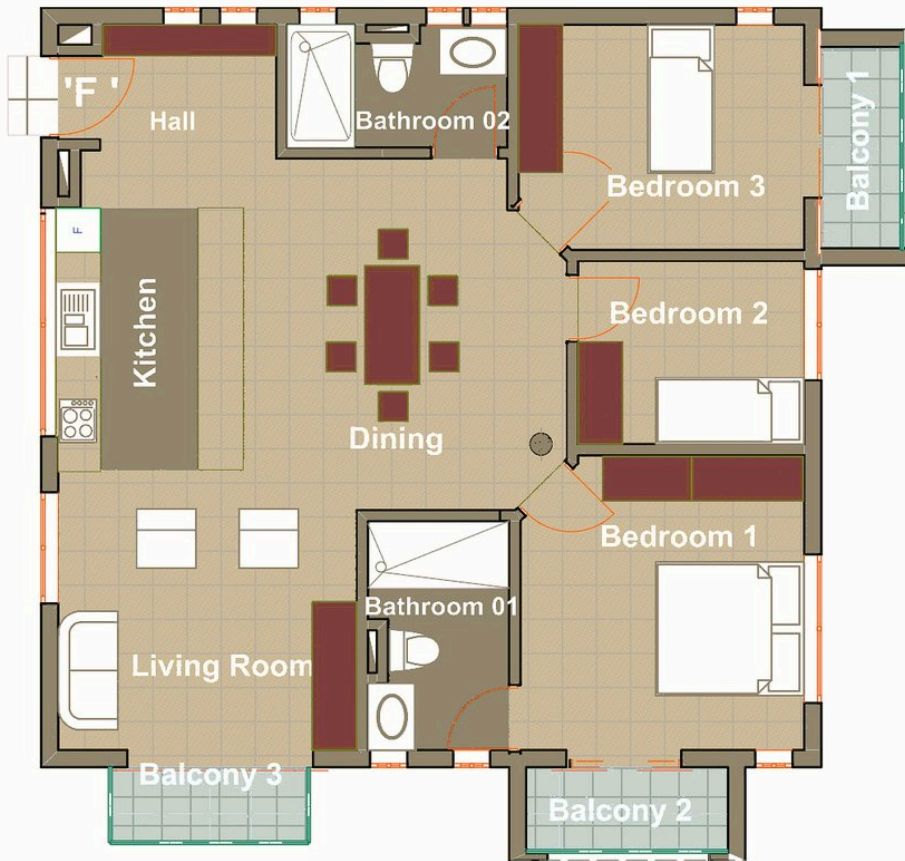


	M2
Hall	6.73
Living Room	18.79
Dining	13.55
Kitchen	13.08
Laundry	5.92
Bedroom 1	18.52
Bathroom 01	7.55
Bedroom 2	22.36
Bathroom 02	7.05
Bedroom Hall	1.52
Apartment - net area	115.07
Balcony 1	3.9
Balcony 2	2.73
Apartment E - Total area	121.7

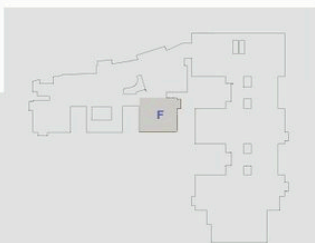


3 BEDROOM APARTMENT

Apartment 'F' F.01, F.02, F.03, F.04

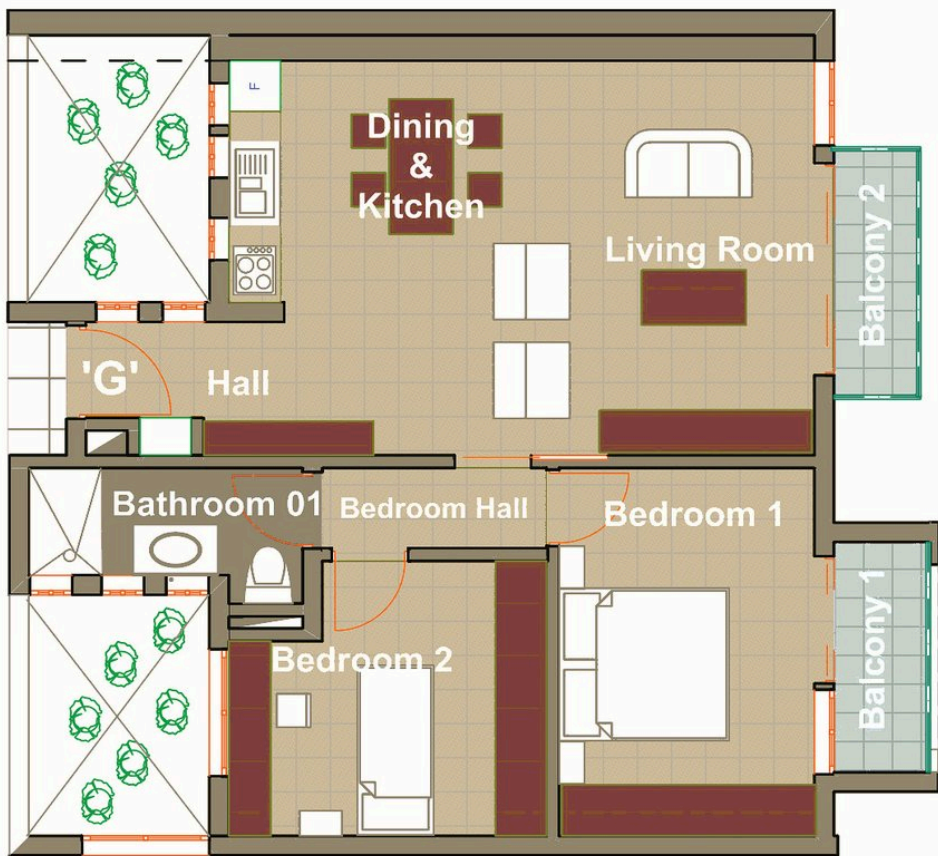


	M2
Hall	5.58
Living Room	15.49
Dining	16.8
Kitchen	11.8
Bedroom 1	16.8
Bathroom 01	7.61
Bedroom 2	9.48
Bathroom 02	6.38
Bedroom 3	13.64
<hr/>	
Lower floor - net area	103.58
Balcony 1	3.9
Balcony 2	3.9
Balcony 3	2.75
<hr/>	
Apartment F - Total area	114.13



2 BEDROOM APARTMENT

Apartment 'G' G.01, G.02, G.03, G.04



	M2
Hall	4.04
Living Room	14.63
Dinning/Kitchen	8.95
Bedroom 1	15.92
Bathroom 01	6.83
Bedroom 2	12.92
Bedroom Hall	2.86
Apartment G - net area	66.15
Balcony 1	3.9
Balcony 2	2.97
Apartment G - Total area	73.02

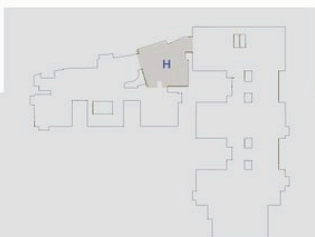


3 BEDROOM APARTMENT

Apartment 'H' H.01, H.02, H.03, H.04

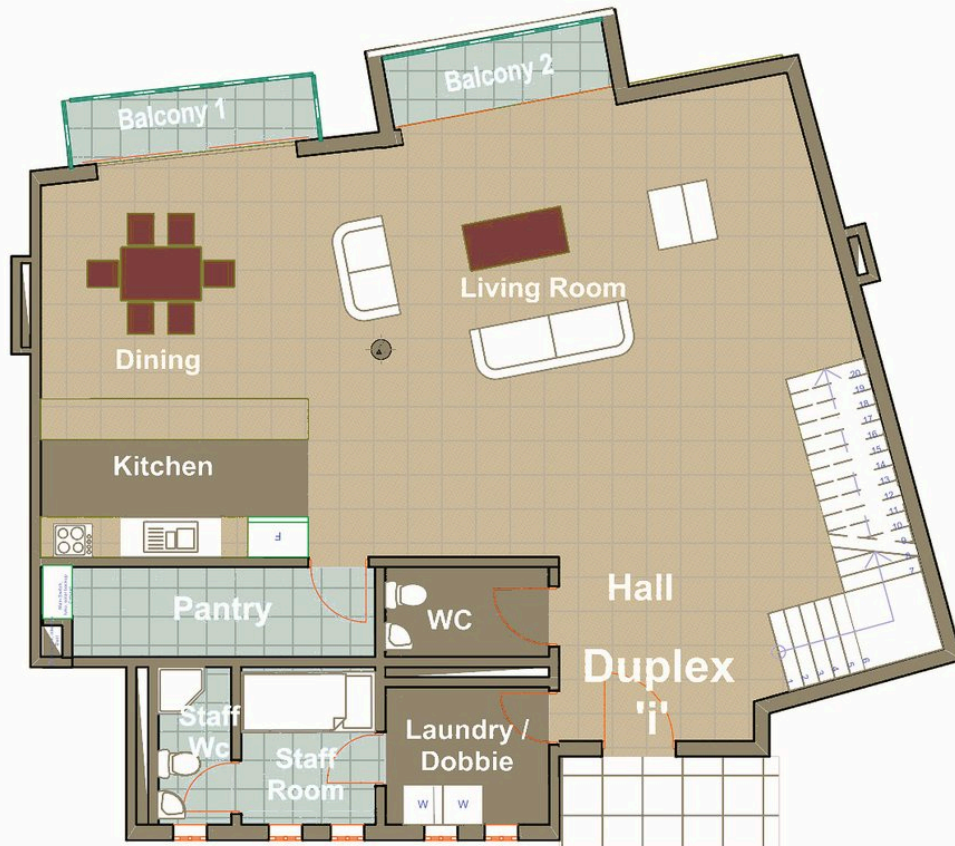


Hall	M2
Hall	10.4
Living Room	30.32
Dining	10.97
Kitchen	16.43
Dobbie / Laundry	4.28
staff room & Wc	10.61
Study	7.85
Bedroom Hall	5.9
Bedroom 1	16.196
Bathroom 01	12.7
Bedroom 2	15.68
Bedroom 3	12.8
Bathroom 02	7.14
<hr/>	
Apartment H - net area	161.276
<hr/>	
Apartment H - Total area	161.276



3 BEDROOM DUPLEX - LOWER FLOOR

Duplex 'I' I.01, I.02

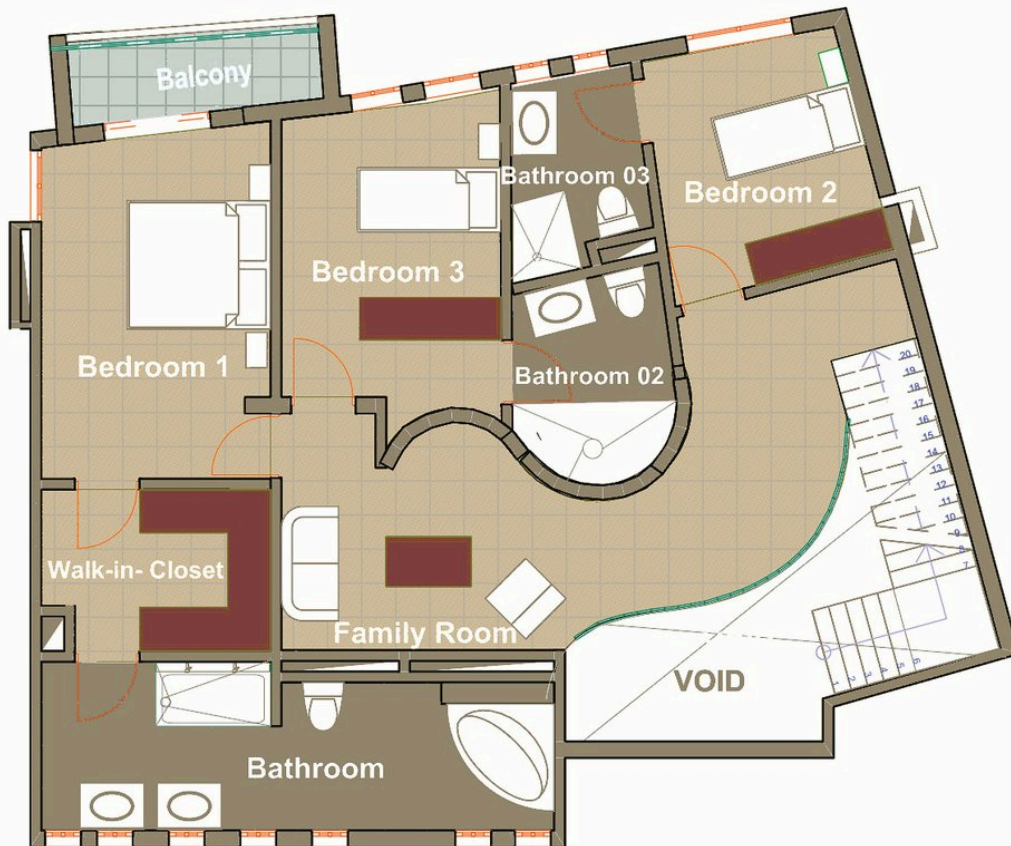


	M2
<i>Lower floor</i>	
Hall	11.98
Stairway	8.72
Living Room	44.3
Dining/Kitchen	28.1
Balcony 2	3.83
Dobbie Laundry	7.06
Staff room & WC	9.55
WC	4.52
<hr/>	
Lower floor - net area	118.06
Balcony 1	4.67
Pantry	8.69
Lower floor - Total area	131.42



3 BEDROOM DUPLEX - UPPER FLOOR

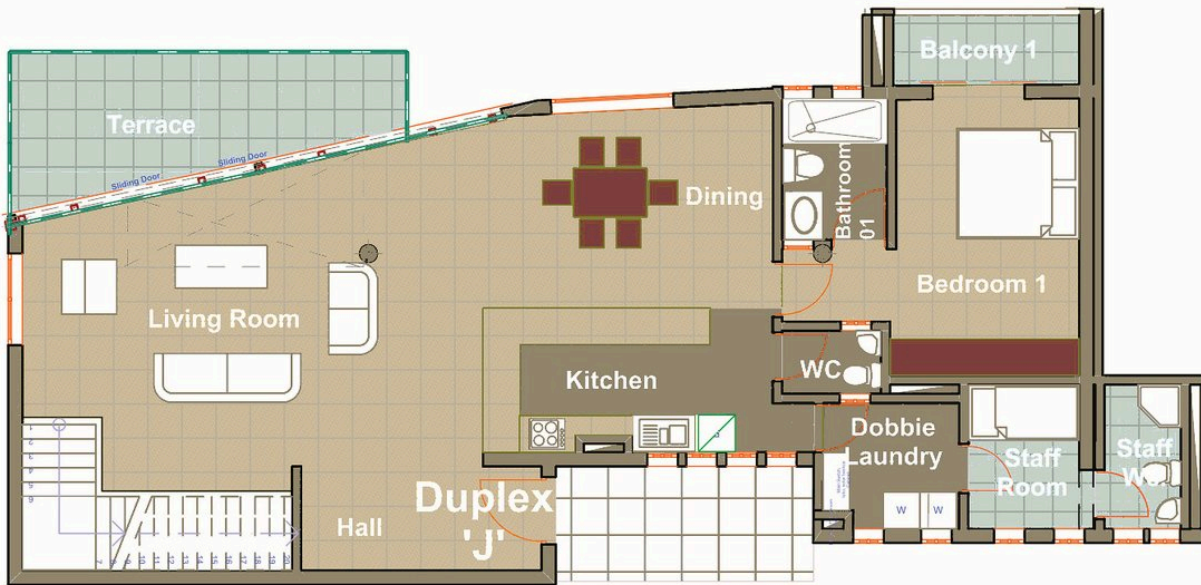
Duplex 'i' I.01, I.02



	M2
<i>Upper floor</i>	
Landing area	3.63
Bedroom Hall & Family Room	20.76
Bedroom 1	18.2
Bathroom 01	19.4
Walk -in-closet	8.89
Bedroom 2	15.05
Bathroom 02	7.23
Bedroom 3	11.69
Bathroom 03	6.8
<hr/>	
Upper level - net area	111.65
Balcony	5.18
Upper floor - Total area	116.83
<hr/>	
Duplex'i' - Total area	248.25

4 BEDROOM DUPLEX APARTMENT - LOWER FLOOR

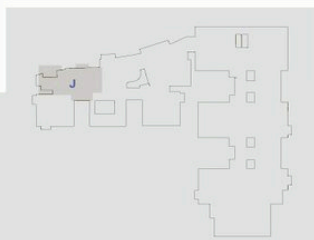
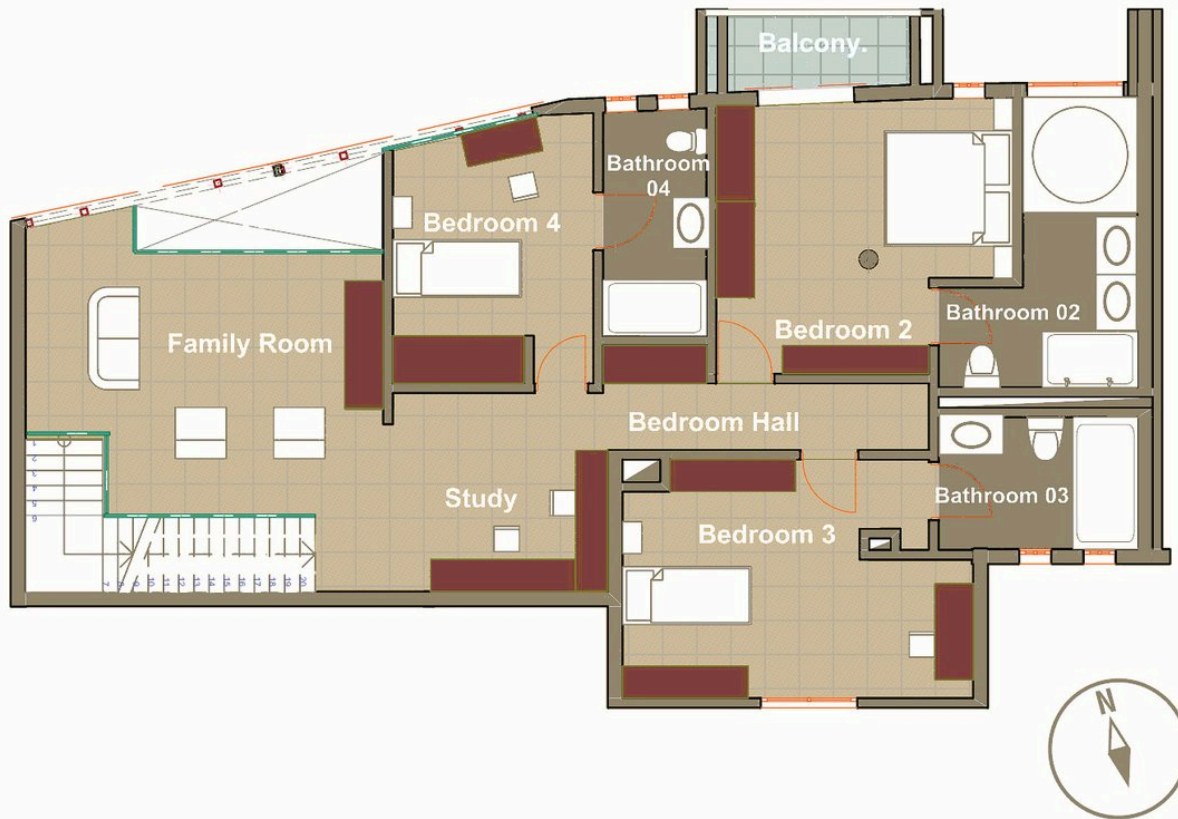
Duplex 'J' J.01, J.02



	M2
<i>Lower floor</i>	
Entrance Hall	8.4
Stairway	8.29
Living Room	37.86
Dining	16.15
Kitchen	12.4
Bedroom 1	17.7
Bathroom 01	5
Dobbie Laundry	5.88
Staff Room	4.248
Staff room WC	2.940
WC 2.6	
Lower floor - net area	121.46
Social terrace	14.21
balcony 1	3.463
Lower floor - Total area	139.13

4 BEDROOM DUPLEX APARTMENT - UPPER FLOOR

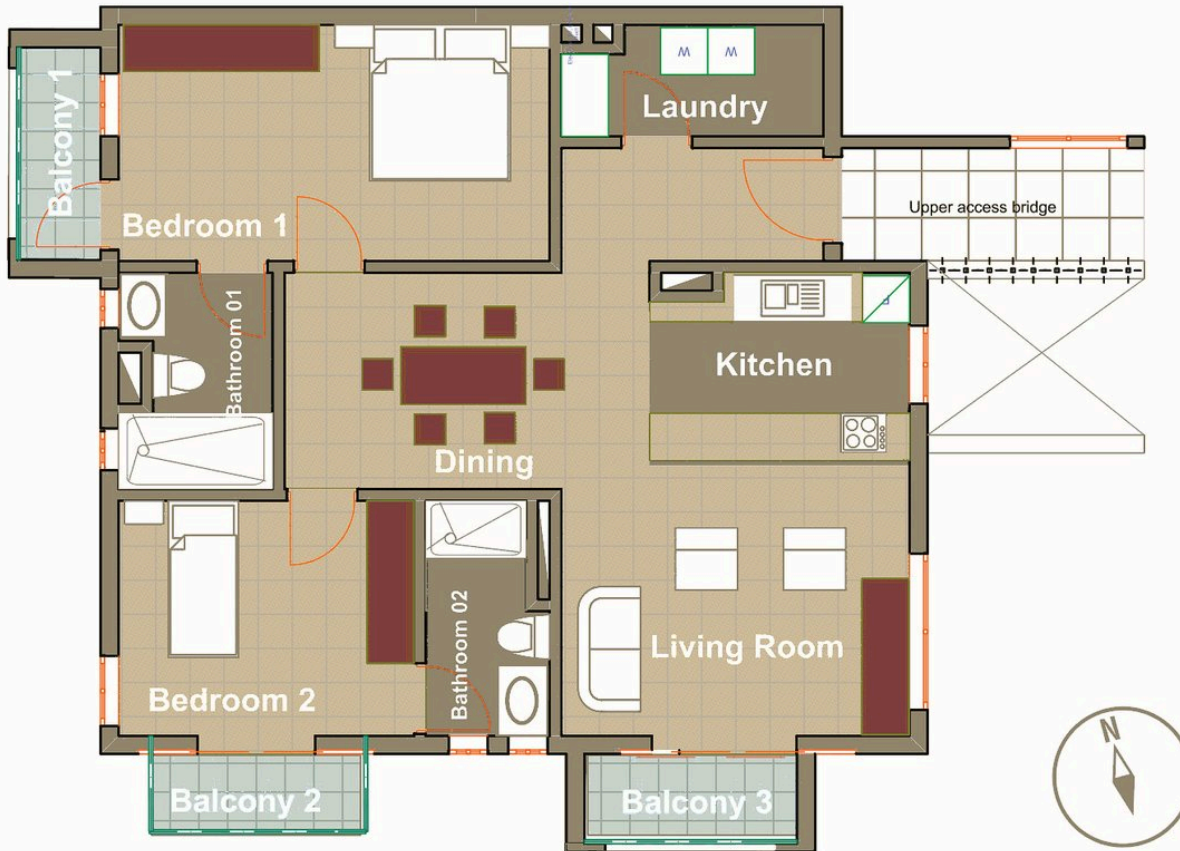
Duplex 'J' J.01, J.02



	M2
<i>Upper floor</i>	
Bedroom Hall	7.22
Bedroom 2	19.81
Bathroom 02	10.09
Bedroom 3	20.79
Bathroom 03	6.35
Bedroom 4	14.28
Bathroom 04	6.83
Family room & Studio	22.74
Upper floor net area	108.11
Balcony	5.61
Upper floor - Total area	113.72
Duplex'j' - Total area	252.85

2 BEDROOM APARTMENT

Apartment 'K' K.02, K.03, K.04

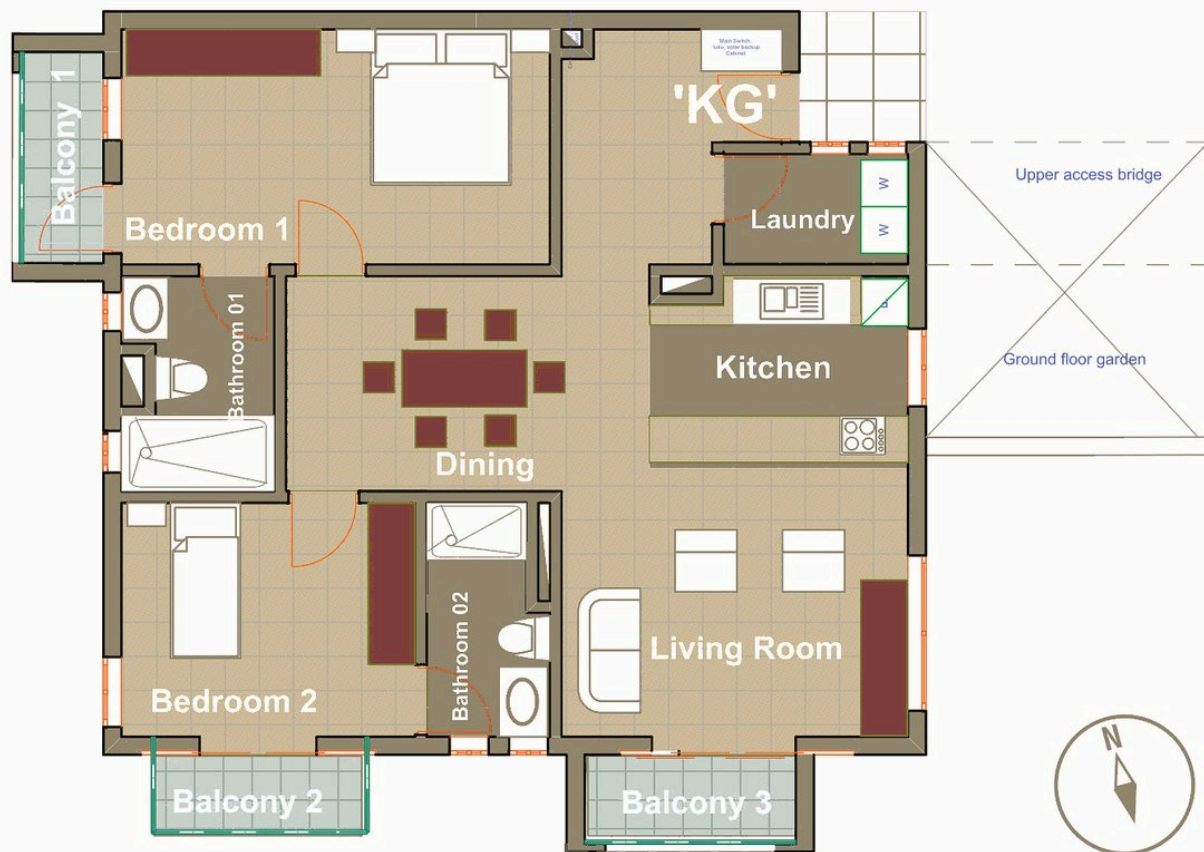


	M2
Hall	5.15
Living Room	17.46
Dining	13.04
Kitchen	9.07
Bedroom 1	20.14
Bathroom 01	7.09
Bedroom 2	14.19
Bathroom 02	5.98
Laundry	6.56
<hr/>	
Apartment K - net area	98.70
Balcony 1	3.78
Balcony 2	2.77
Balcony 3	3.97
<hr/>	
Apartment K - Total area	109.22

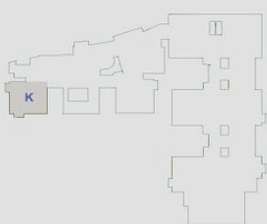


2 BEDROOM APARTMENT

Apartment 'KG' ground floor KG.01



M2	
Hall	9.07
Living Room	17.46
Dining	13.04
Kitchen	9.07
Bedroom 1	20.14
Bathroom 01	7.09
Bedroom 2	14.19
Bathroom 02	5.98
Dobbie / Laundry	4.45
<hr/>	
Apartment KG - net area	100.49
Balcony 1	3.78
Balcony 2	2.77
Balcony 3	3.97
<hr/>	
Apartment KG - Total area	111.01



1 BEDROOM STUDIO

Studio 'L' L.01, L.02, L.03

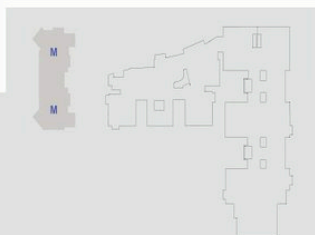
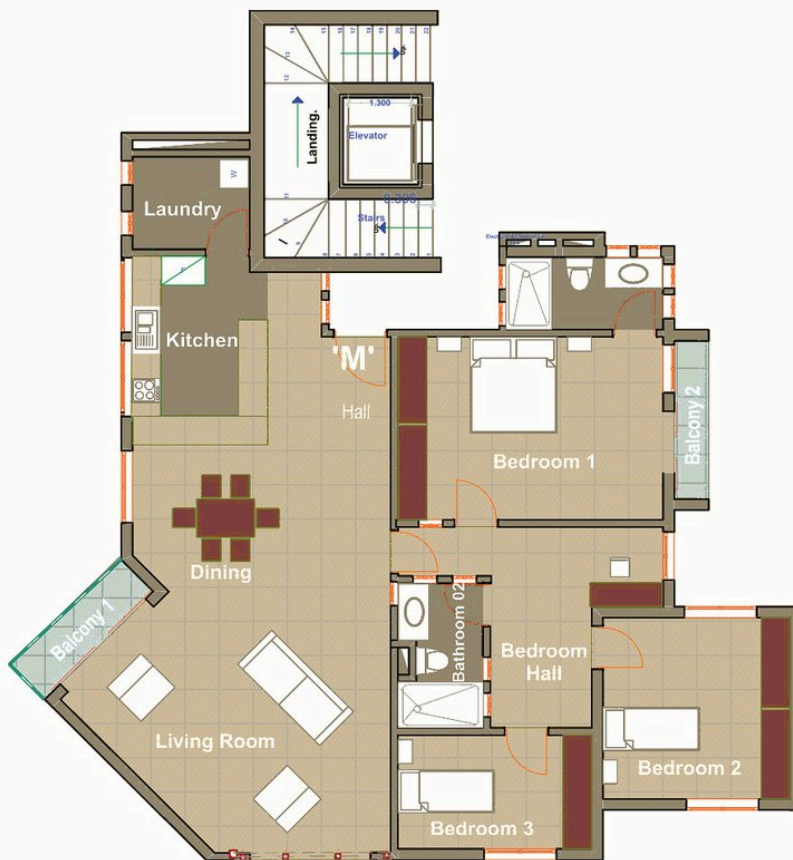


	M2
Hall	4.58
Kitchen	11.19
Living, Dining	26.15
Bedroom 1	18.67
Bathroom 01	5.72
<hr/>	
Studio L - net area	66.31
Balcony 1	3.87
Balcony 2	3.43
<hr/>	
Studio L - Total area	73.61



3 BEDROOM APARTMENT

Apartment 'M' M.01, M.02, M.03, M.04



	M2
Entrance Hall	3.21
Living Room	33.24
Dining	18.49
Kitchen	15.02
Dobbie / Laundry	6.2
Study	6.74
Bedroom Hall	6.57
Master Bedroom	24.22
Master Bathroom	6.32
Bedroom 2	18.18
Bedroom 3	13.81
Bathroom 2	6.57
<hr/>	
Apartment H - net area	158.57
Balcony 1	5.35
Balcony 2	2.51
<hr/>	
Apartment M - Total area	166.43

3 BEDROOM APARTMENT

Apartment 'M1' M1.05, M1.06, M1.07, M1.08



	M2
Entrance Hall	3.21
Living Room	33.24
Dining	18.49
Kitchen	15.02
Dobbie / Laundry	6.2
Study	6.74
Bedroom Hall	6.57
Master Bedroom	24.22
Master Bathroom	6.32
Bedroom 2	18.18
Bedroom 3	13.81
Bathroom 2	6.57
<hr/>	
Apartment H - net area	158.57
Balcony 1	5.35
Balcony 2	2.51
<hr/>	
Apartment H - Total area	166.43



BOOK A VIEWING

Make Grand Vue your Arusha address.

For availability, floor plans and viewings,
contact the Grand Vue Apartments team.

ADDRESS PPF AGM Building, Njiro
P.O. Box 421, Arusha, Tanzania

PHONE +255 719 180 380

EMAIL info@grandvueapartments.com

WEB grandvueapartments.com





Luxury apartments for rent in Olorien, Arusha.

+255 719 180 380

info@grandvueapartments.com

grandvueapartments.com