

Inspired by Nature... Powered by your Dreams!



*G*RANDVUE  
APARTMENTS  
Property of your dreams



# TABLE OF CONTENTS

**Arusha** 2-3

**Grand Vue Apartments** 4-7

**GVA - Interiors** 8-9

**GVA - Facilities & Amenities** 10

**GVA - Plan** 11

## **Apartments**

Apartment A 12

Apartment B 13

Apartment B1 14

Apartment C 15

Duplex D 16-19

Apartment E 20

Apartment F 21

Apartment G 22

Apartment H 23

Apartment I 24-25

Apartment J 26-27

Apartment K 28

Apartment KJ 29

Studio L 30

Apartment M 31

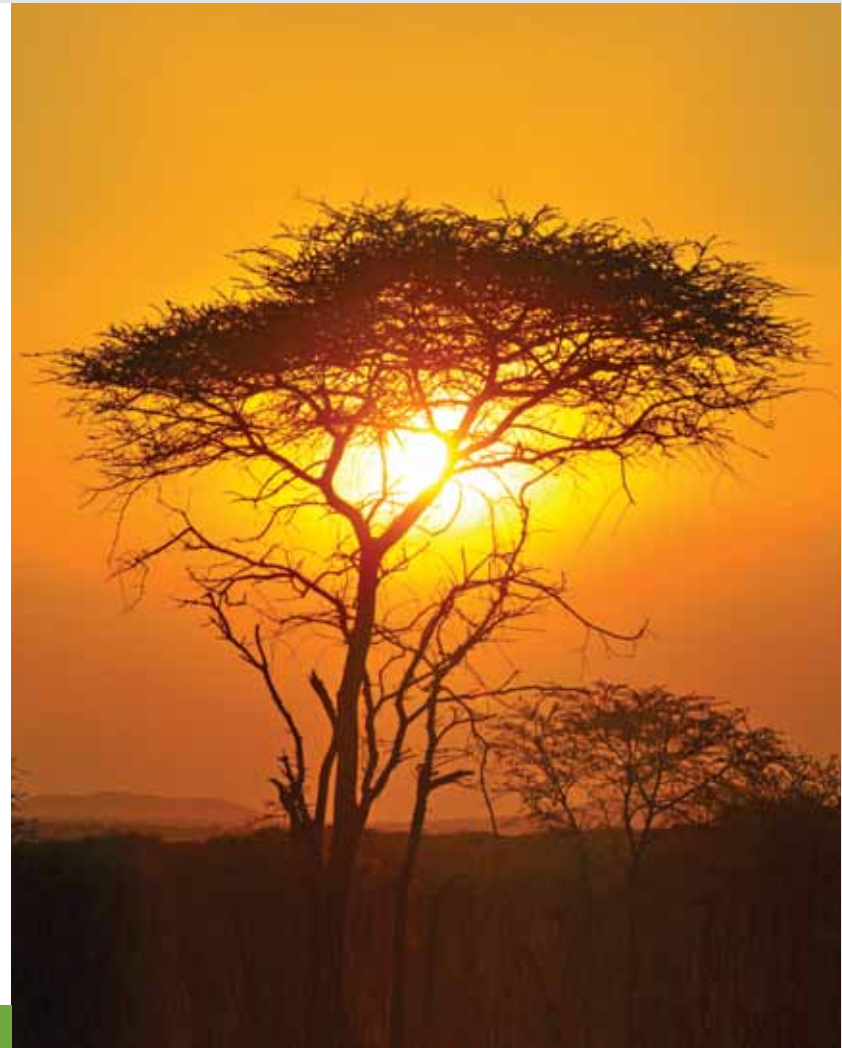
Apartment M1 32

Contact us 33

## THE HOME OF KILIMANJARO AND SERENGETI

*Discover the place where the heavens meet the earth, where the rhythm of nature pounds to the beat of an African drum, and where life is all about a revival of the senses.*

Arusha is the beautiful home of Tanzania's oldest and most popular national park, also a world heritage site and recently proclaimed a 7th world wide wonder, the Serengeti. It is famed for its annual migration, when some



six million hooves pound the open plains, as more than 200,000 zebra and 300,000 Thomson's gazelles join the wildebeest's trek for fresh grazing. Yet even when the migration is quiet, the Serengeti offers the most arguably scintillating game-viewing in Africa: great herds of buffalo, smaller groups of elephants and giraffes, and thousand upon thousand of herds, topis, kongonis, impalas and Grant's gazelle.

Not only is this wondrous national park found close to Arusha in Manyara, but you will also find the the highest mountain in Africa and the highest free-standing mountain in the world, the majestic and spectacular Mt. Kilimanjaro in Moshi. The beautiful view and scene of the snow-capped peak is one of the most arresting sites on the continent.

The Serengeti and the Kilimanjaro are testament to the lush beauty of the greenery, vegetation and beautiful views of Arusha, all the more reason why Arusha is the ideal setting to have your home.







**GRAND VUE APARTMENTS  
HAS THE PERFECT LOCATION  
FOR YOU AND YOUR FAMILY**

**GRAND VUE  
APARTMENTS**

Enjoy all the facilities that make life enjoyable:  
Clubs, gym, golf, the best shopping malls and  
restaurants in town, renowned schools,  
all just a few minutes away.

GRAND VUE APARTMENTS cultivates a state of the art new residential development that is perfectly positioned in the urban oasis, the heart of Olorien, with lush gardens and breathtaking scenery of the Mt. Meru and Mt. Kilimanjaro to enhance your relaxation and comfort.

The Grand Vue Apartments is a set of ultra contemporary condominium, with many amenities to create an atmosphere such as ample parking, swimming pool, gym, club house and many others.

Stay tuned to find all the finishes, fittings and designs of an impeccable taste and superior standard.



Grand Vue Development Designer

# Sandra de Kusserow

*Sandra de Kusserow originally comes from Colombia but has gathered substantial international experience throughout the years.*

This gives her architecture a persistent understanding and attention to the relationship between a project and its needs, lifestyle, culture and innovativeness. plus her familiarity with Africa have given her the sensitivity to appreciate the differences in people, landscapes and cultures and to incorporate it as a special touch for producing designs of character and distinction (learn more on [www.sandradekusserow.com](http://www.sandradekusserow.com)).







Watch out for the panoramic view from your window of Mount Meru picturesque outline and enjoy the best of Arusha's sunsets!

GRAND VUE APARTMENT'S Interior spaces are functional, aesthetical yet cost effective, using state-of-the art technology for energy conservation and requiring least maintenance and operating costs.

GVA interiors have kitchens, bathrooms, loft extensions, bespoke wardrobes and cabinetry, soft furnishing, furniture, flooring, lighting and media.

Enjoy and experience state of the art apartments coupled by an amazing beautiful view and scenery you will find nowhere else in the world!



# GRAND VUE APARTMENTS

*A magical place to  
call home!*

- The minute you walk into Grand Vue, experience a special place!
- Think contemporary with modern interiors that reflect your personality.
- Perfect and suitable for the modern and cosmopolitan family in search of comfort with an ideal fusion of indoor and out door living.
- Openness is the overriding theme: the lounge , dining and kitchen blend seamlessly, flowing out onto the extended balconies and terraces.
- Social areas and bedrooms open up and look out onto the sparkling pool, Mt. Meru and the tranquil garden settings.
- The 'Duplex' Apartments: a magical place to call home!

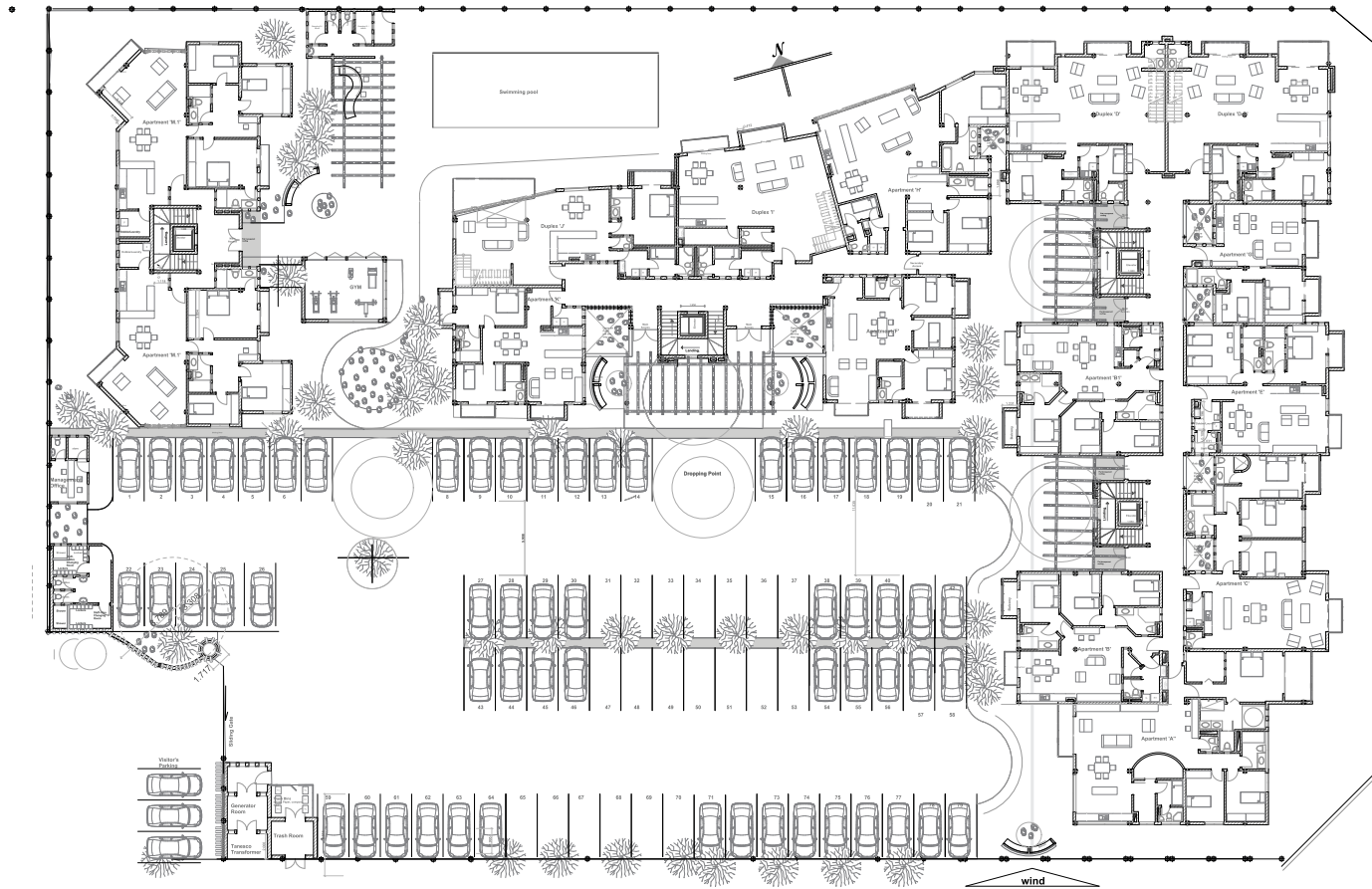
## AMENITIES

- Pool
- Gym
- Generator
- Passenger lifts
- Landscaped garden
- Grohe fittings
- Sanitary wear
- Azulev tiles
- Balconies / terraces
- High quality paint
- Prime
- Wells
- Security
- Parking
- UPWC – windows and doors
- Guarantee / warranty for 6 months





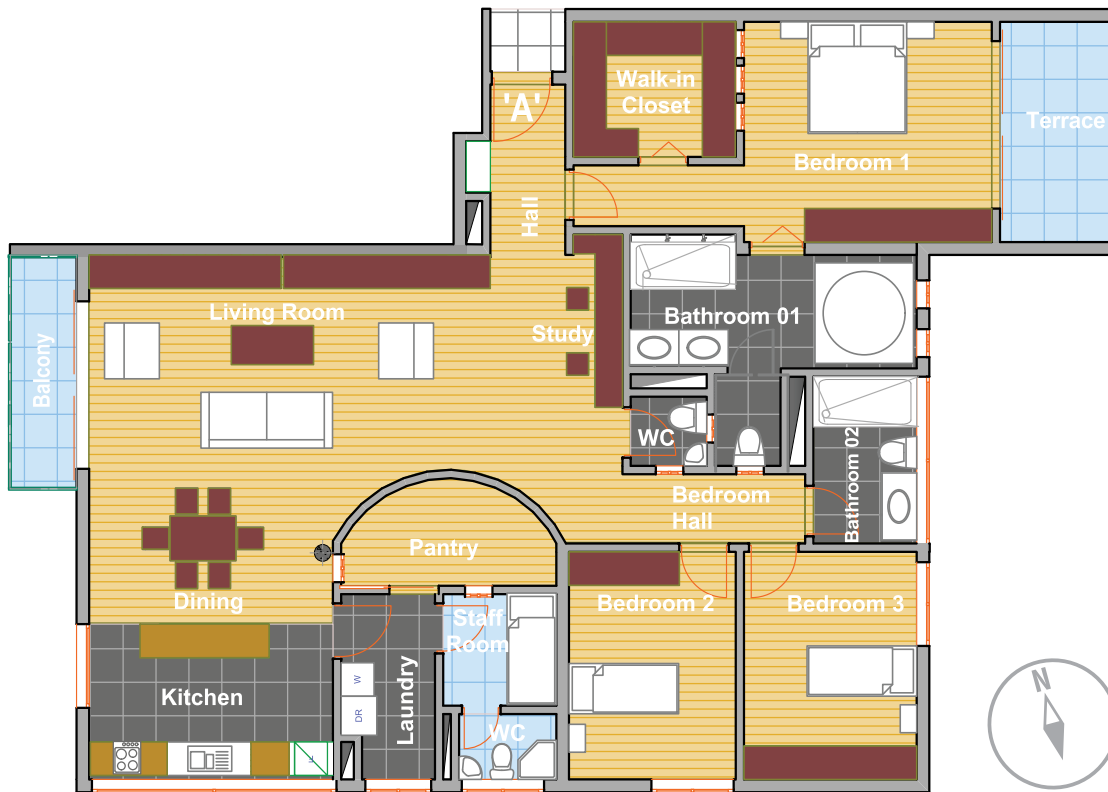
## GRAND VUE APARTMENTS - PLAN



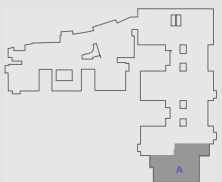


## 3 BEDROOM APARTMENT

Apartment 'A' A.01, A.02, A.03, A.04



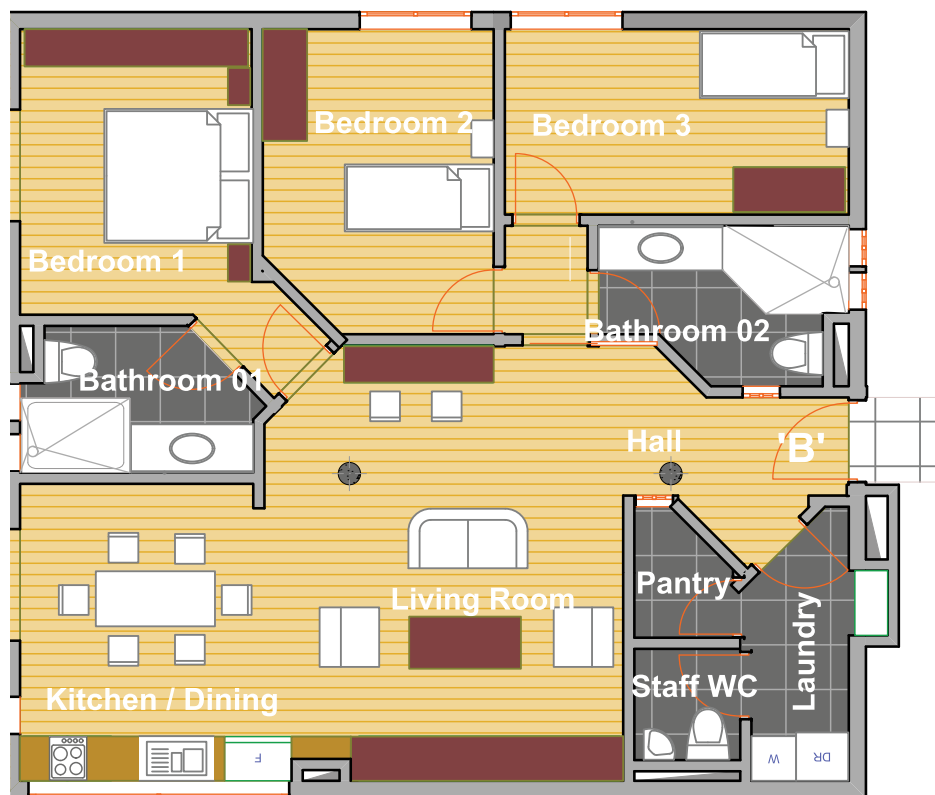
	M2
Hall	6.17
Study	10.2
Living Room	30.31
Dining	14.18
Kitchen	14.18
WC	3.02
pantry	6.99
Staff area	8.19
Laundry	8.99
Bedroom 1	24.25
Walk-in-closet	9.3
Bathroom 01	15.88
Bedroom 2	14.6
Bedroom 3	15.76
Bathroom 02	7.93
<hr/>	
Apartment - net area	189.95
<hr/>	
Externals:	
Balcony	5.4
Terrace	9.8
<hr/>	
Apartment - Total area M2	205.15



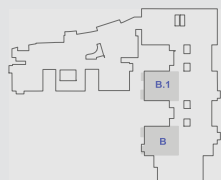
*GRANDVUE*  
APARTMENTS

## 3 BEDROOM APARTMENT

Apartment 'B' B.01, B.02, B.03, B.04

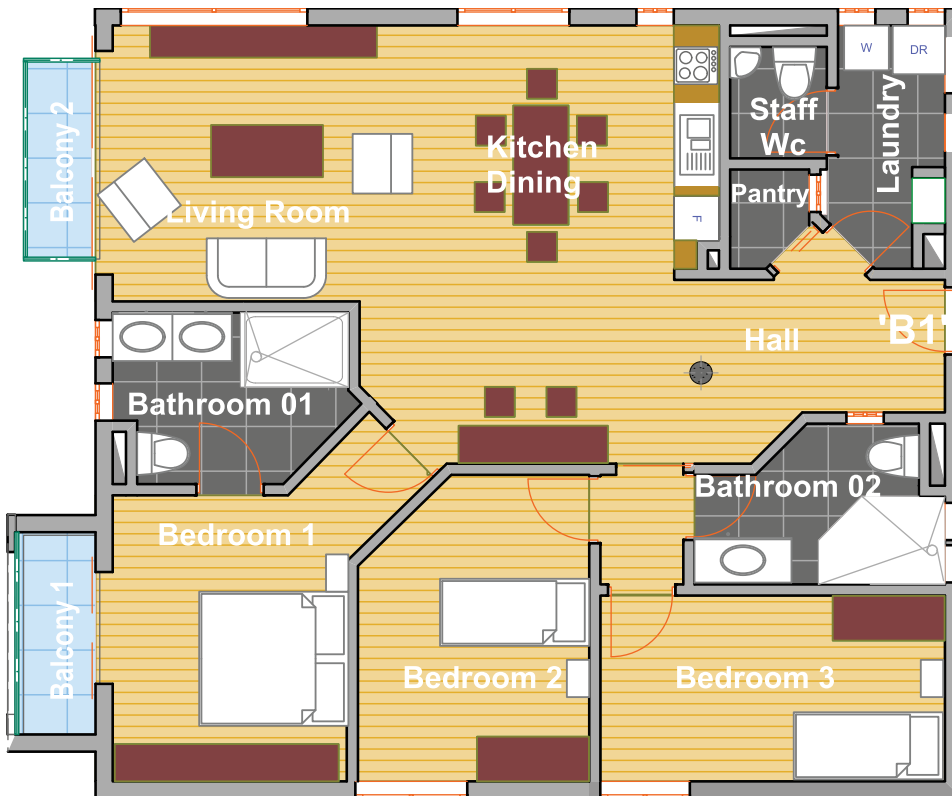


	M2
Hall & studio	14.41
Living Room	16.18
Dining/Kitchen	20.45
Laundry	7.92
Pantry	2.56
Staff WC	3.71
Bedroom 1	15.68
Bathroom 01	7.55
Bedroom 2	14.09
Bedroom 3	13.86
Bathroom 02	7.47
<hr/>	
Apartment - net area	123.88
Balcony 1	3
Balcony 2	2.72
<hr/>	
Apartment - Total area	129.6

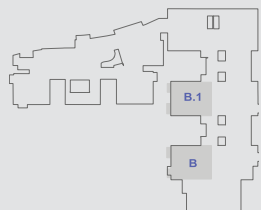


## 3 BEDROOM APARTMENT

Apartment 'B1' B1.1, B1.2, B1.3, B1.4



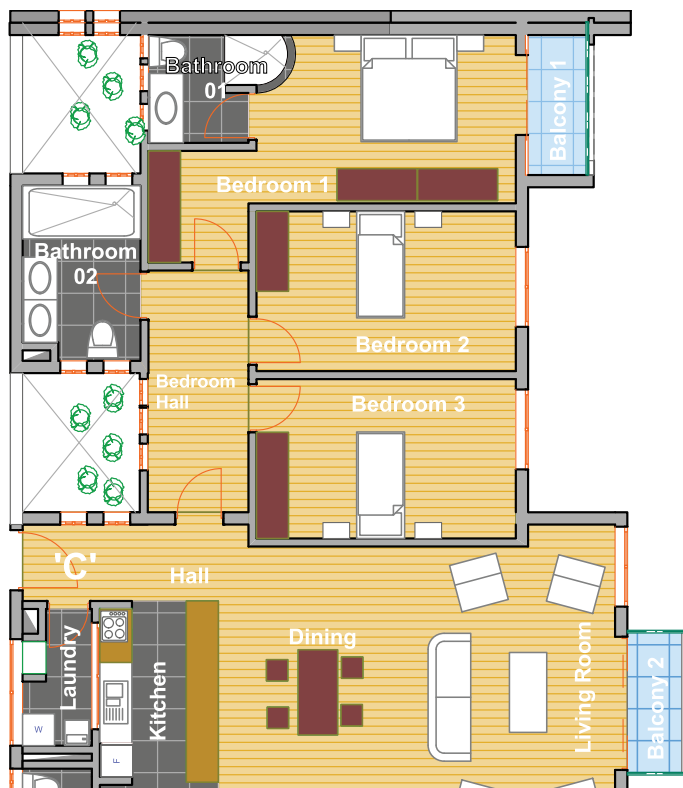
	M2
Entrance Hall & studio	15.22
Living Room	19.02
Dining/Kitchen	16.9
Laundry	6.09
Pantry	1.42
Staff WC	3.4
Bedroom 1	15.86
Bathroom 01	8.59
Bedroom 2	13.87
Bedroom 3	14.13
Bathroom 02	7.4
<hr/>	
Apartment - net area	121.97
Balcony 01	3
Balcony 02	2.72
<hr/>	
Apartment - Total area	127.69



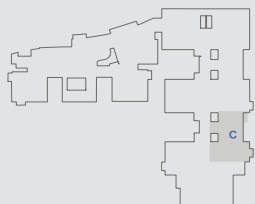
*GRANDVUE*  
APARTMENTS

## 3 BEDROOM APARTMENT

Apartment 'C' C.01, C.02, C.03, C.04

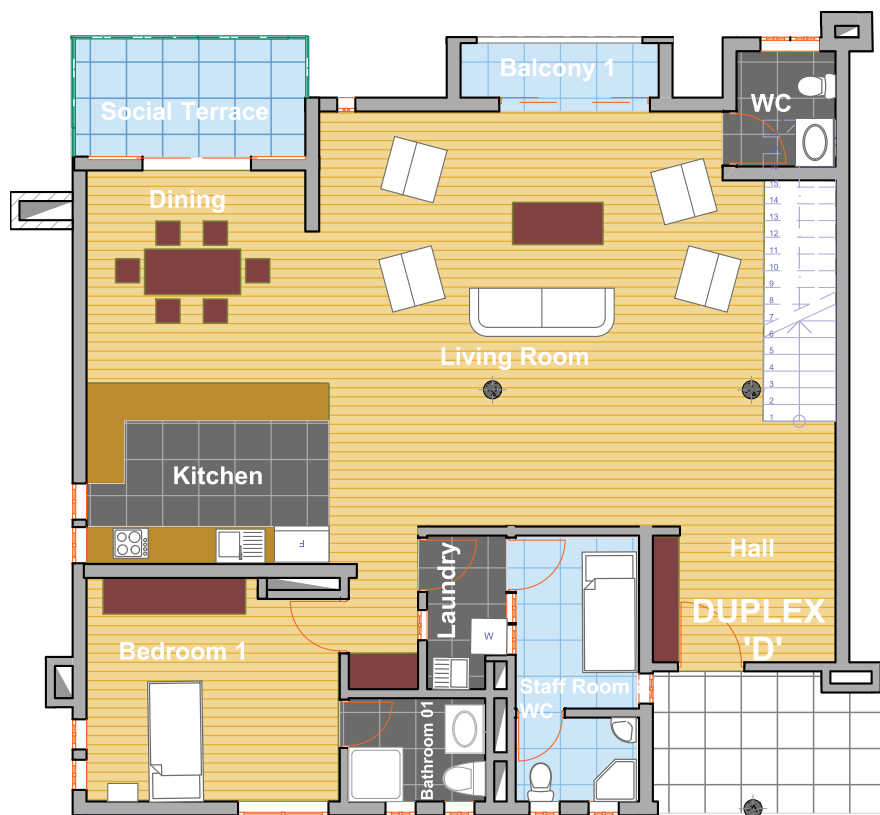


	M2
Hall	4.45
Living Room	27.11
Dining/Kitchen	29.13
Laundry	4.83
Wc	3.2
Bedroom 1	17.52
Bedroom 2	16.51
Bedroom 3	16.51
Bathroom 01	3.31
Bathroom 02	9.6
Bedroom Hall	8.98
<hr/>	
Apartment - net area	141.15
Externals:	
Balcony 1	2.98
Balcony 2	3
<hr/>	
Apartment - Total area	147.13

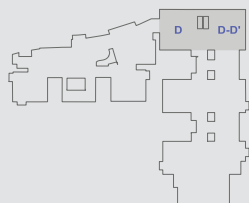


## 5 BEDROOM APARTMENT - LOWER FLOOR

Duplex 'D' D.01, D.02



	M2
<i>Lower Floor</i>	
Hall	7.84
Living Room	51.76
Dining	15.67
Kitchen	15
Dobbie Laundry	4.19
Staff Room & WC	11.89
Wc	5.08
Bedroom 1	18.14
Bathroom 01	4.48
Stairway	8.22
Lower floor - net area	142.27
Balcony 3.75	
Social Terrace 7.8	
Lower floor - Total area	153.82

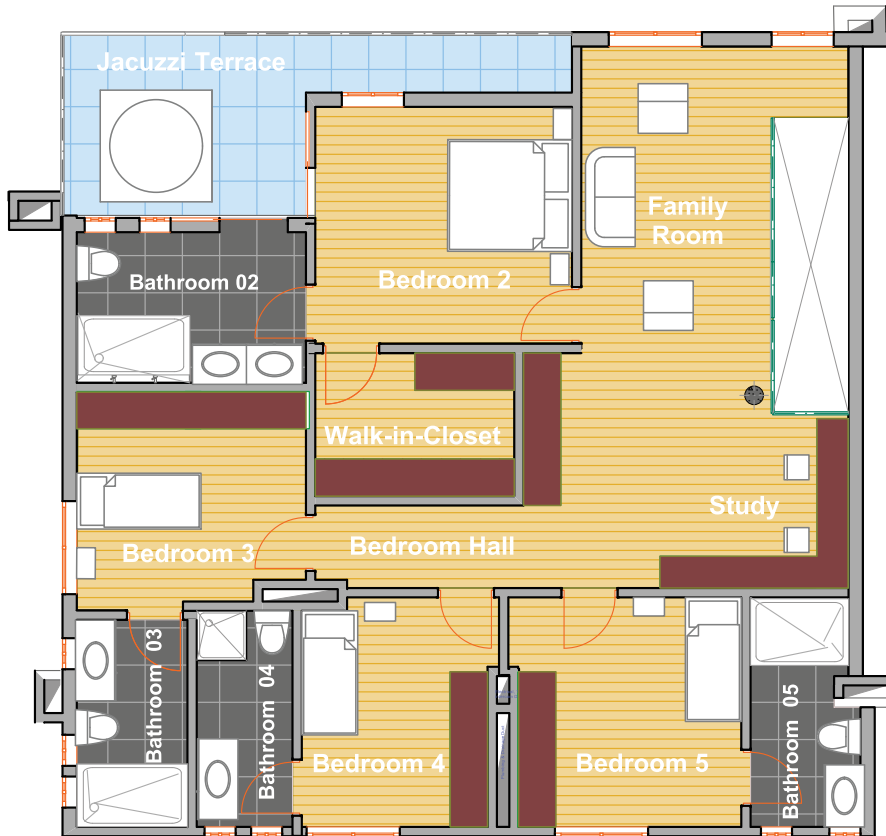


*GRANDVUE*  
APARTMENTS



## 5 BEDROOM APARTMENT - UPPER FLOOR

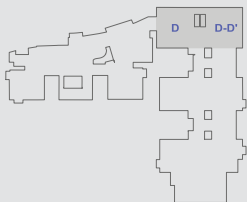
Duplex 'D' D.01, D.02



M2

*Upper floor*

Bedroom 2	18.7
Bathroom 02	11.62
Jacuzzi area	15.76
Walk -in-closet	8.56
Bedroom 3	14
Bathroom 03	7.9
Bedroom 4	13.71
Bathroom 04	6.58
Bedroom 5	15.85
Bathroom 05	6.64
Bedroom Hall	4.68
Study	20.13
Family room	19.01
Upper level - net area	163.14
Duplex 'D' - Total area	316.96

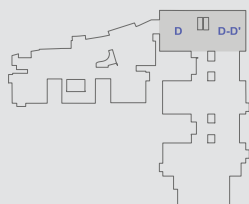


## 5 BEDROOM APARTMENT - LOWER FLOOR

Duplex 'D - D' (R. side ) Duplex D - D-D.03, D-D.04



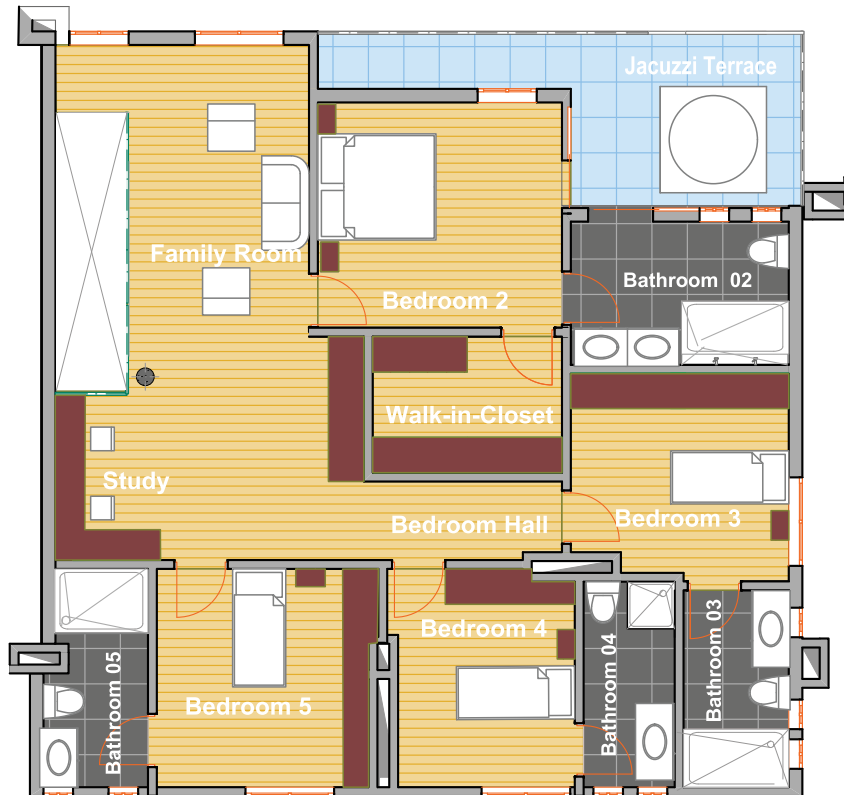
	M2
<i>Lower floor</i>	
Hall	7.84
Living Room	51.76
Dining	15.67
Kitchen	15.1
Laundry	4.19
Staff room & WC	11.89
WC	5.08
Bedroom 1	18.14
Bathroom 01	4.48
Stairway	8.22
Lower floor - net area	142.37
Balcony 01	3.76
Social Terrace	9.93
Lower floor - Total area	156.06



*GRANDVUE*  
APARTMENTS

## 5 BEDROOM APARTMENT - UPPER FLOOR

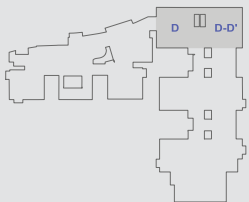
Duplex 'D - D' (R. side ) Duplex D - D-D.03, D-D.04



M2

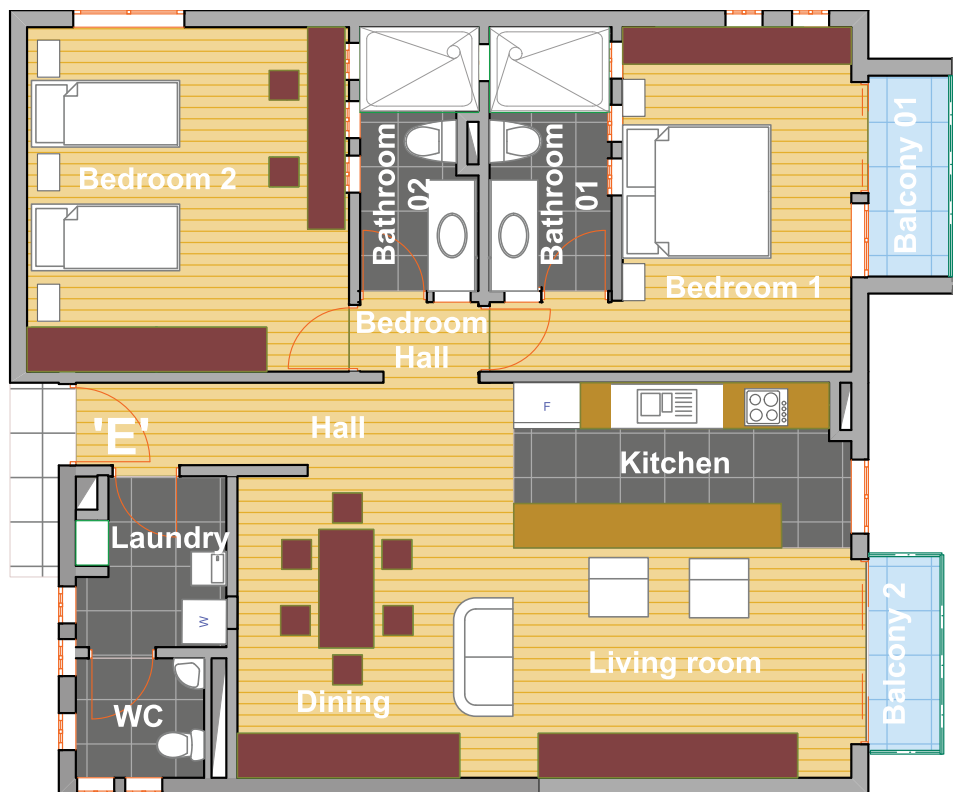
### Upper floor

Bedroom 2	17.62
Bathroom 02	11.01
Jacuzzi area	15.7
Walk -in-closet	7.95
Bedroom 3	13.13
Bedroom 4	16.15
Bathroom 03 (Shared by 3&4)	9.83
Bedroom 5	14.13
Bathroom 04	7.99
Bedroom Hall	6.33
Study	21.15
Family room	19.01
Upper level - net area	160
Duplex 'D-D' - Total area	316.06

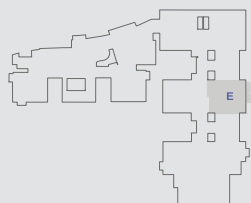


## 2 BEDROOM APARTMENT

Apartment 'E' E.01, E.02, E.03, E.04



	M2
Hall	6.73
Living Room	18.79
Dining	13.55
Kitchen	13.08
Laundry	5.92
Bedroom 1	18.52
Bathroom 01	7.55
Bedroom 2	22.36
Bathroom 02	7.05
Bedroom Hall	1.52
Apartment - net area	115.07
Balcony 1	3.9
Balcony 2	2.73
Apartment E - Total area	121.7

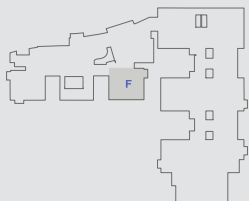


## 3 BEDROOM APARTMENT

Apartment 'F' F.01, F.02, F.03, F.04



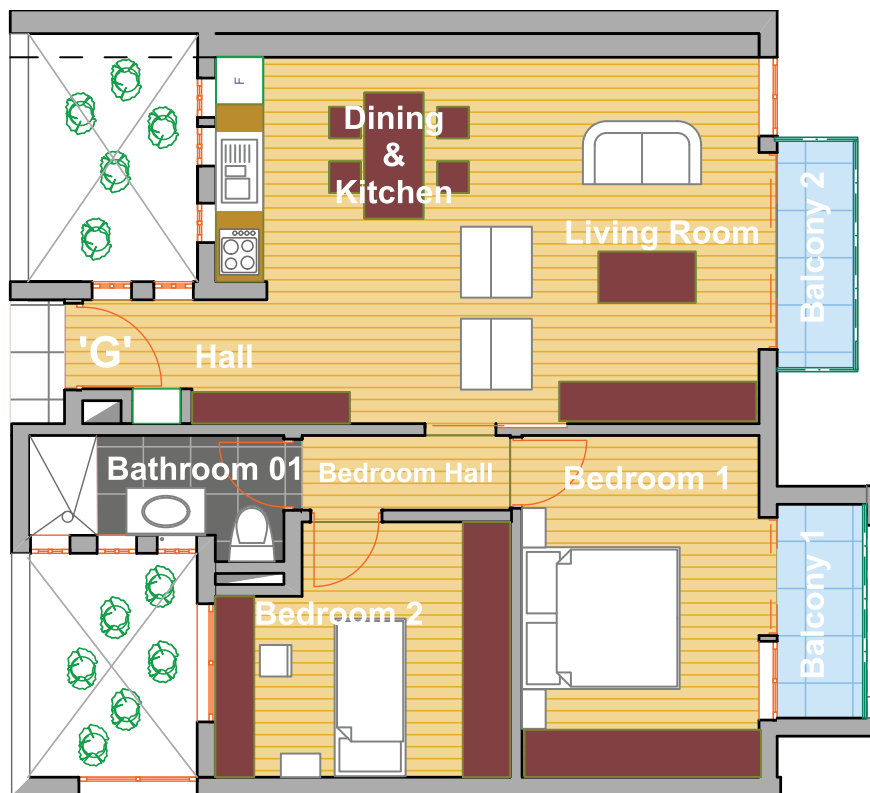
	M2
Hall	5.58
Living Room	15.49
Dining	16.8
Kitchen	11.8
Bedroom 1	16.8
Bathroom 01	7.61
Bedroom 2	9.48
Bathroom 02	6.38
Bedroom 3	13.64
<hr/>	
Lower floor - net area	103.58
Balcony 1	3.9
Balcony 2	3.9
Balcony 3	2.75
<hr/>	
Apartment F - Total area	114.13



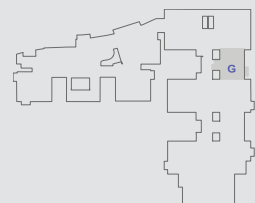


## 2 BEDROOM APARTMENT

Apartment 'G' G.01, G.02, G.03, G.04



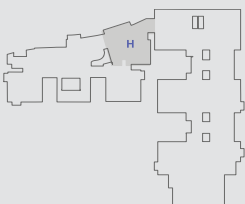
	M2
Hall	4.04
Living Room	14.63
Dinning/Kitchen	8.95
Bedroom 1	15.92
Bathroom 01	6.83
Bedroom 2	12.92
Bedroom Hall	2.86
Apartment G - net area	66.15
Balcony 1	3.9
Balcony 2	2.97
Apartment G - Total area	73.02



*GRANDVUE*  
APARTMENTS

## 3 BEDROOM APARTMENT

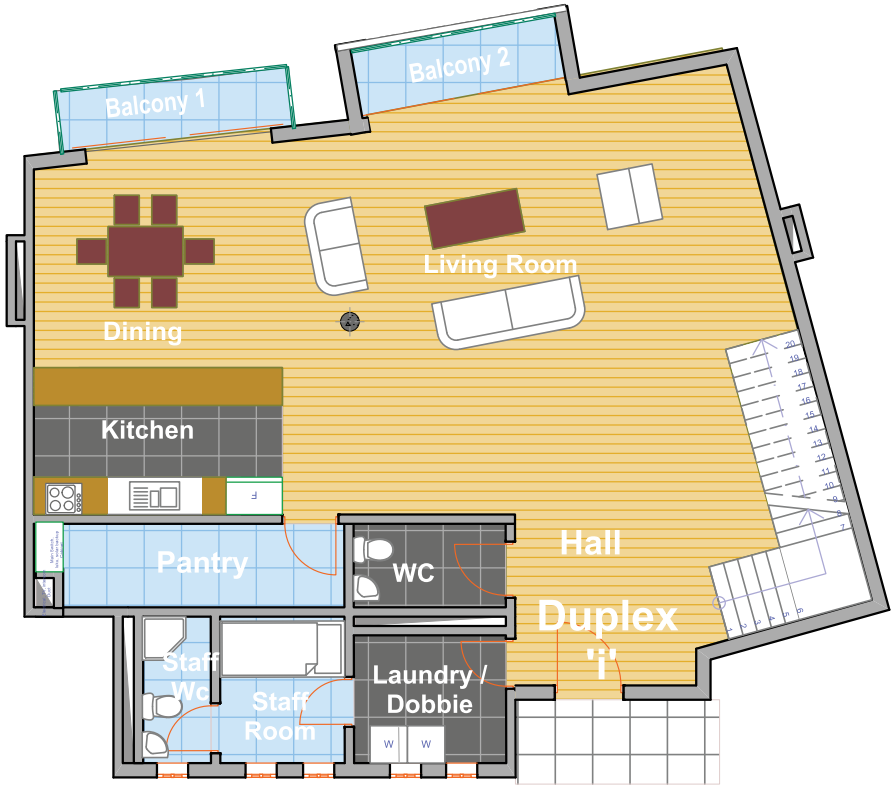
Apartment 'H' H.01, H.02, H.03, H.04



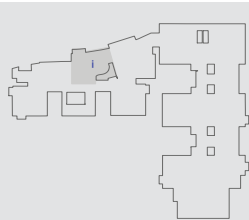
	M2
Hall	10.4
Living Room	30.32
Dining	10.97
Kitchen	16.43
Dobbie / Laundry	4.28
staff room & Wc	10.61
Study	7.85
Bedroom Hall	5.9
Bedroom 1	16.196
Bathroom 01	12.7
Bedroom 2	15.68
Bedroom 3	12.8
Bathroom 02	7.14
Apartment H - net area	161.276
Apartment H - Total area	161.276

3 BEDROOM DUPLEX - LOWER FLOOR

Duplex 'I' I.01, I.02

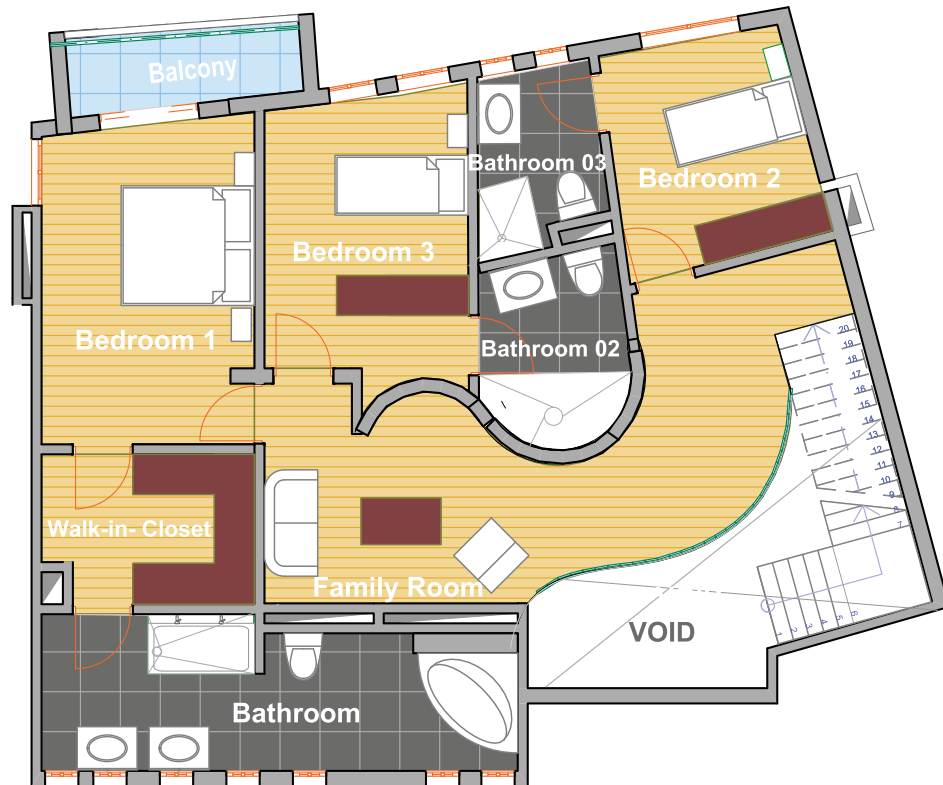


	M2
Lower floor	
Hall	11.98
Stairway	8.72
Living Room	44.3
Dining/Kitchen	28.1
Balcony 2	3.83
Dobbie Laundry	7.06
Staff room & WC	9.55
WC	4.52
<hr/>	
Lower floor - net area	118.06
Balcony 1	4.67
Pantry	8.69
Lower floor - Total area	131.42



## 3 BEDROOM DUPLEX - UPPER FLOOR

Duplex 'I' I.01, I.02



M2

### Upper floor

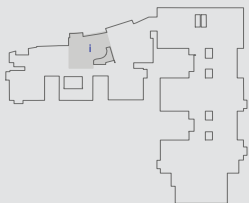
Landing area	3.63
Bedroom Hall & Family Room	20.76
Bedroom 1	18.2
Bathroom 01	19.4
Walk-in-closet	8.89
Bedroom 2	15.05
Bathroom 02	7.23
Bedroom 3	11.69
Bathroom 03	6.8

Upper level - net area	111.65
------------------------	--------

Balcony	5.18
---------	------

Upper floor - Total area	116.83
--------------------------	--------

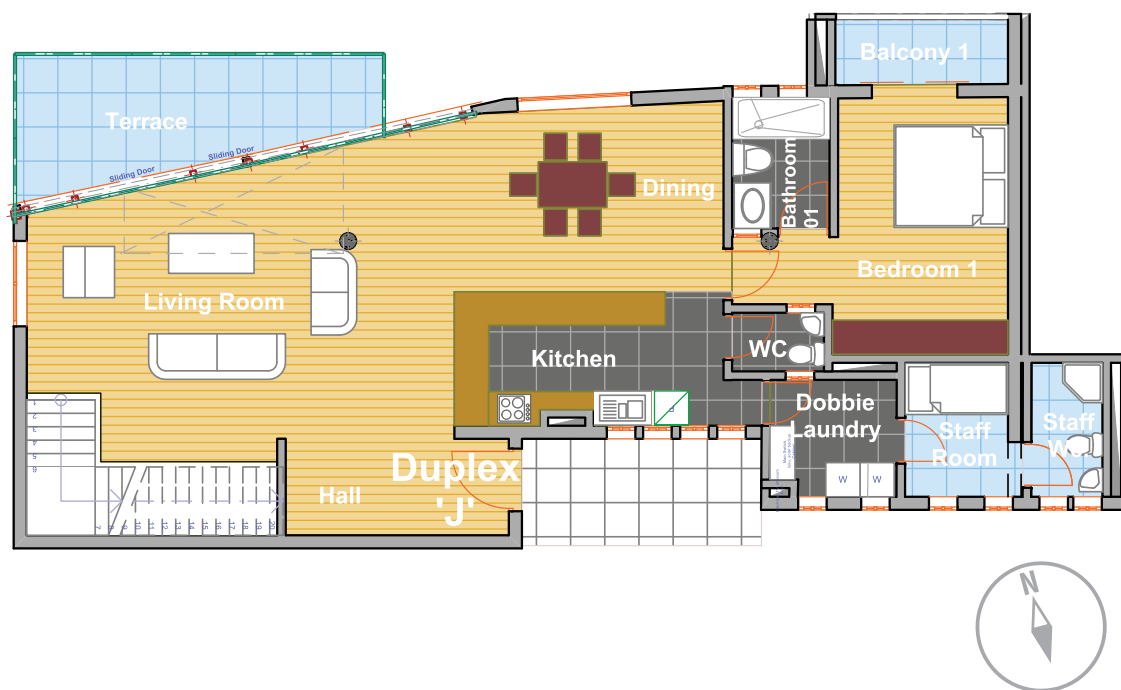
Duplex'i' - Total area	248.25
------------------------	--------



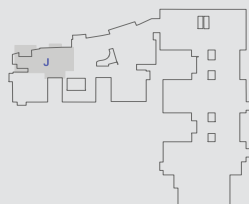
*GRANDVUE*  
APARTMENTS

## 4 BEDROOM DUPLEX APARTMENT - LOWER FLOOR

Duplex 'J' J.01, J.02



	M2
<i>Lower floor</i>	
Entrance Hall	8.4
Stairway	8.29
Living Room	37.86
Dining	16.15
Kitchen	12.4
Bedroom 1	17.7
Bathroom 01	5
Dobbie Laundry	5.88
Staff Room	4.248
Staff room WC	2.940
WC 2.6	
Lower floor - net area	121.46
Social terrace balcony 1	14.21
Lower floor - Total area	139.13

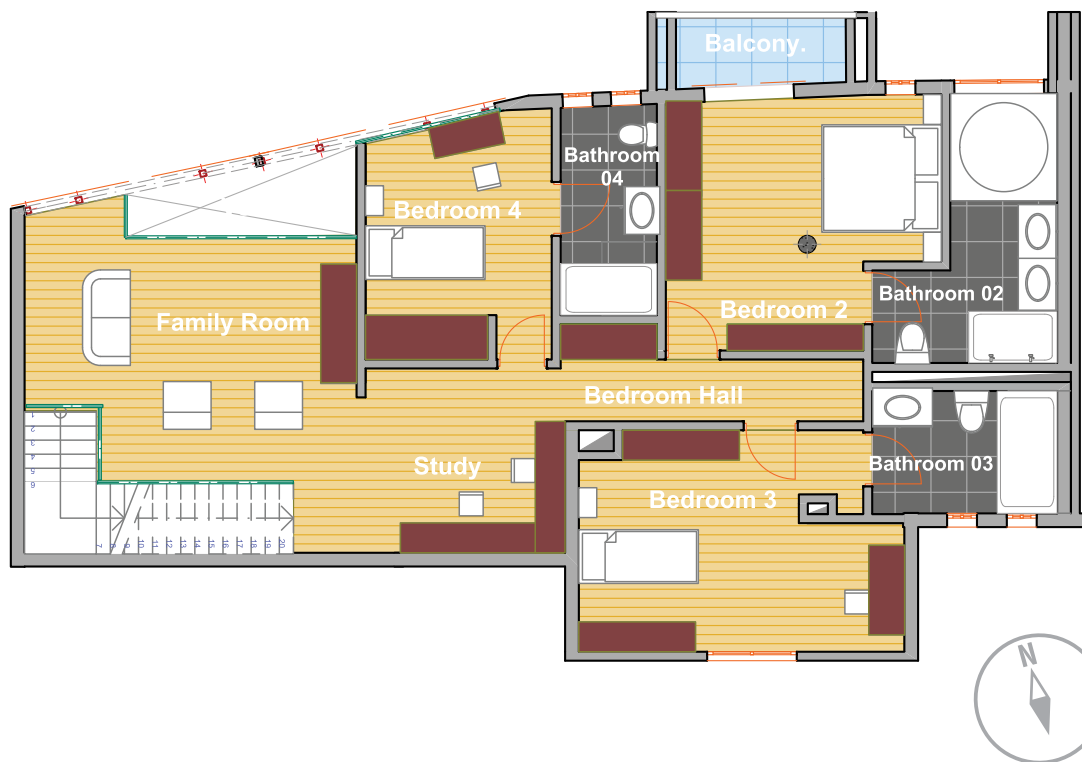


*GRANDVUE*  
APARTMENTS

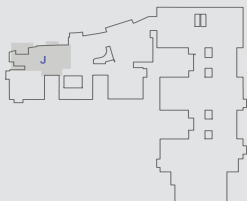


## 4 BEDROOM DUPLEX APARTMENT - UPPER FLOOR

Duplex 'J' J.01, J.02

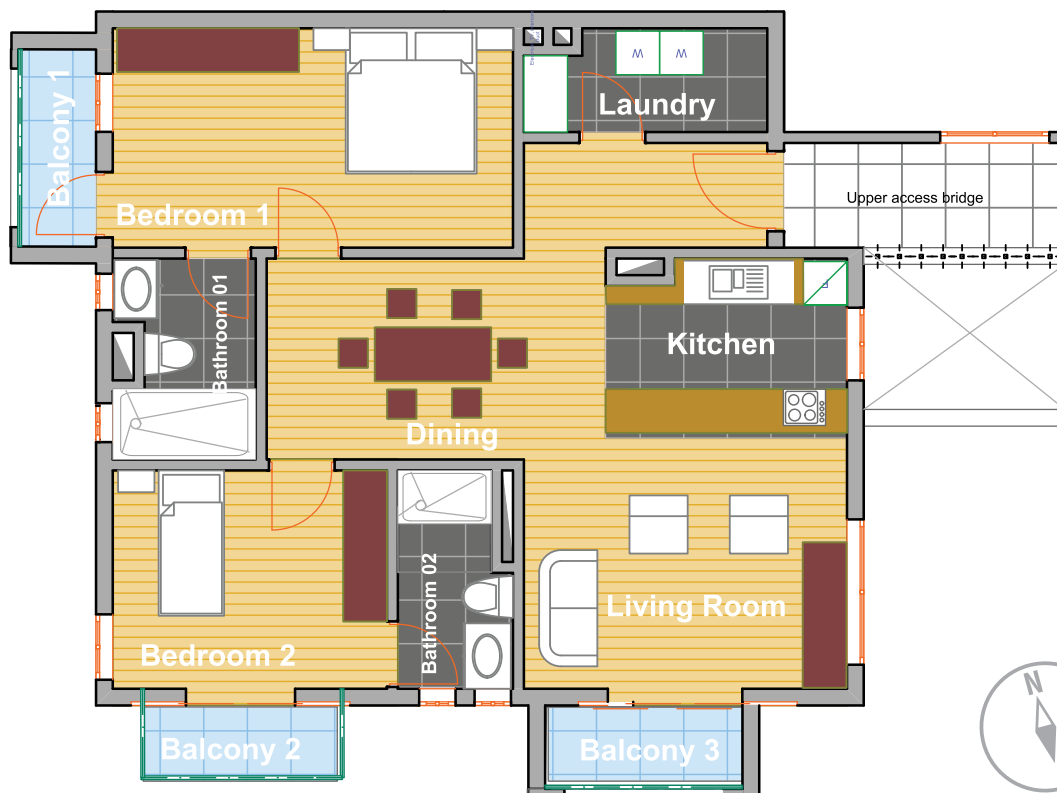


	M2
<i>Upper floor</i>	
Bedroom Hall	7.22
Bedroom 2	19.81
Bathroom 02	10.09
Bedroom 3	20.79
Bathroom 03	6.35
Bedroom 4	14.28
Bathroom 04	6.83
Family room & Studio	22.74
Upper floor net area	108.11
Balcony	5.61
Upper floor - Total area	113.72
Duplex'j' - Total area	252.85

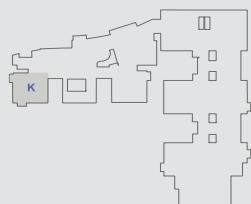


## 2 BEDROOM APARTMENT

Apartment 'K' K.02, K.03, K.04



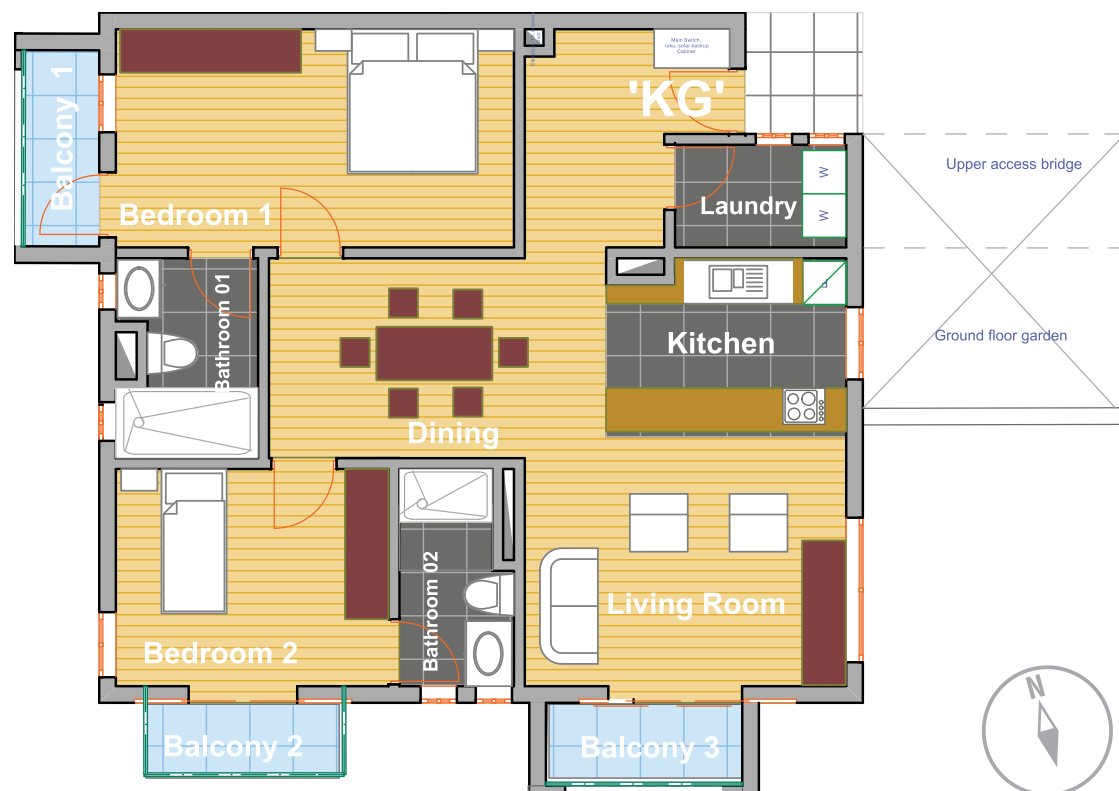
	M2
Hall	5.15
Living Room	17.46
Dining	13.04
Kitchen	9.07
Bedroom 1	20.14
Bathroom 01	7.09
Bedroom 2	14.19
Bathroom 02	5.98
Laundry	6.56
Apartment K - net area	98.70
Balcony 1	3.78
Balcony 2	2.77
Balcony 3	3.97
Apartment K - Total area	109.22



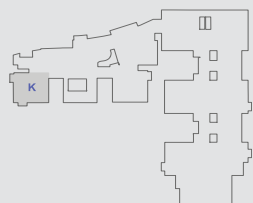
*GRANDVUE*  
APARTMENTS

## 2 BEDROOM APARTMENT

Apartment 'KG' ground floor KG.01

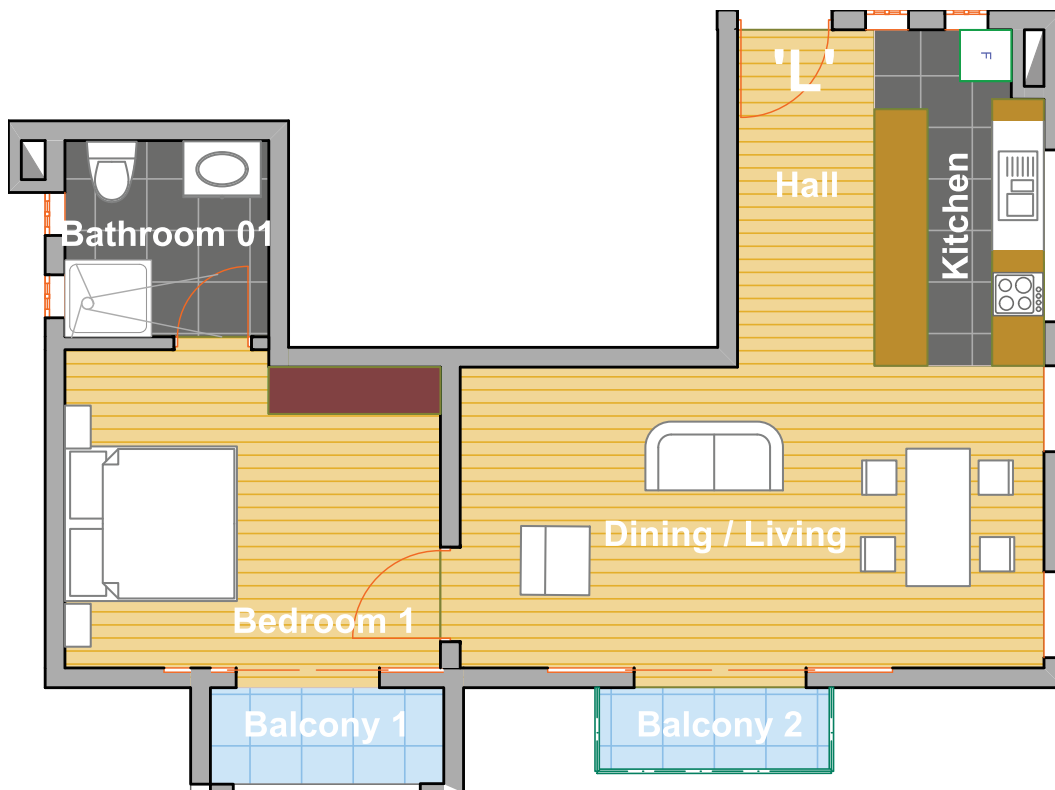


M2	
Hall	9.07
Living Room	17.46
Dining	13.04
Kitchen	9.07
Bedroom 1	20.14
Bathroom 01	7.09
Bedroom 2	14.19
Bathroom 02	5.98
Dobbie / Laundry	4.45
Apartment KG - net area	100.49
Balcony 1	3.78
Balcony 2	2.77
Balcony 3	3.97
Apartment KG - Total area	111.01

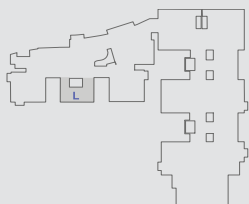


## 1 BEDROOM STUDIO

Studio 'L' L.01, L.02, L.03

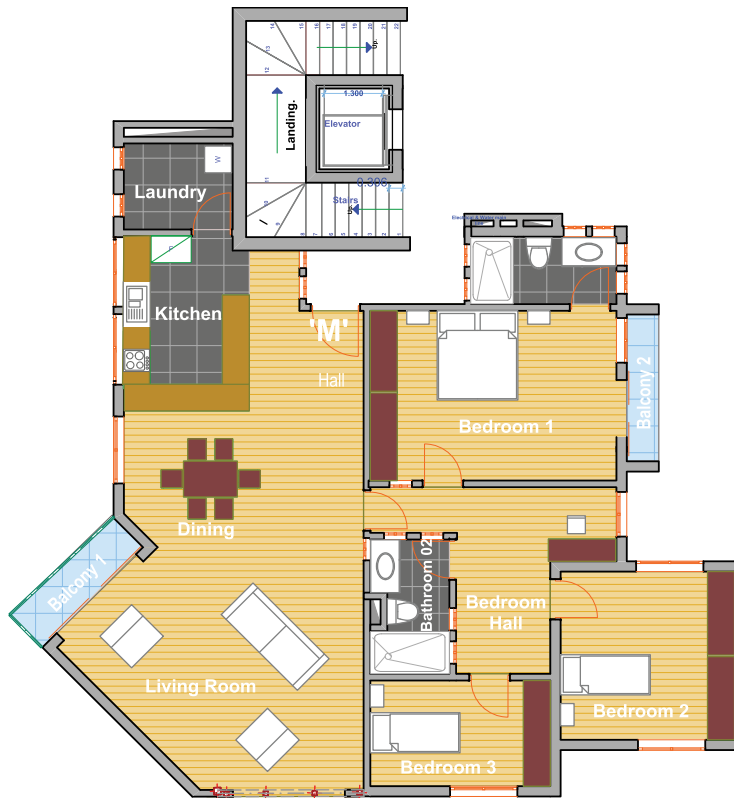


	M2
Hall	4.58
Kitchen	11.19
Living, Dining	26.15
Bedroom 1	18.67
Bathroom 01	5.72
<hr/>	
Studio L - net area	66.31
Balcony 1	3.87
Balcony 2	3.43
<hr/>	
Studio L - Total area	73.61

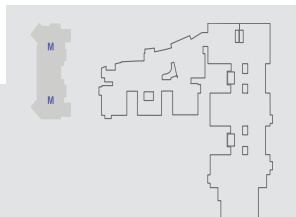


## 3 BEDROOM APARTMENT

Apartment 'M' M.01, M.02, M.03, M.04

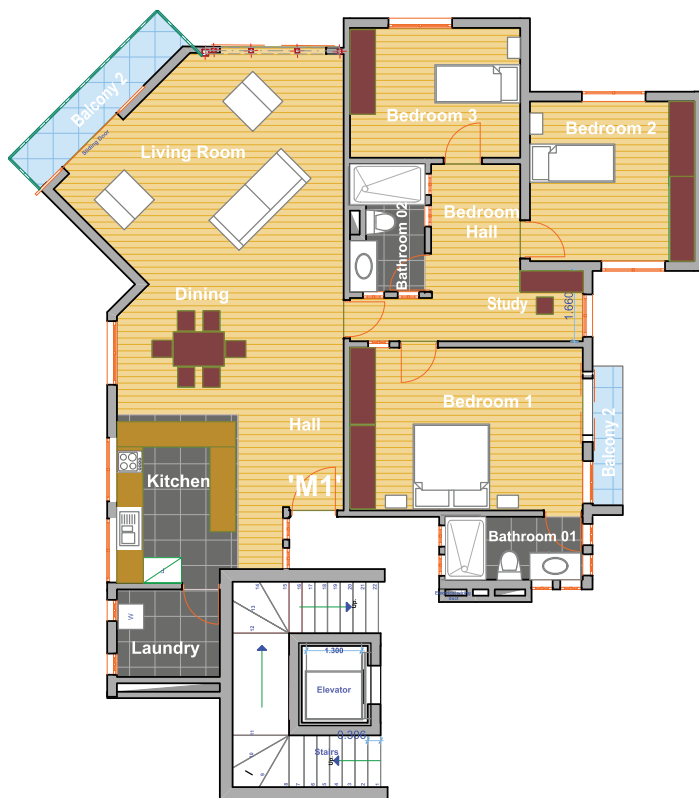


	M2
Entrance Hall	3.21
Living Room	33.24
Dining	18.49
Kitchen	15.02
Dobbie / Laundry	6.2
Study	6.74
Bedroom Hall	6.57
Master Bedroom	24.22
Master Bathroom	6.32
Bedroom 2	18.18
Bedroom 3	13.81
Bathroom 2	6.57
<hr/>	
Apartment H - net area	158.57
Balcony 1	5.35
Balcony 2	2.51
<hr/>	
Apartment M - Total area	166.43

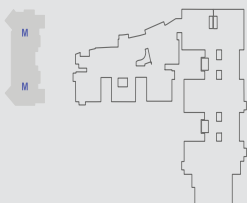


## 3 BEDROOM APARTMENT

Apartment 'M1' M1.05, M1.06, M1.07, M1.08



	M2
Entrance Hall	3.21
Living Room	33.24
Dining	18.49
Kitchen	15.02
Dobbie / Laundry	6.2
Study	6.74
Bedroom Hall	6.57
Master Bedroom	24.22
Master Bathroom	6.32
Bedroom 2	18.18
Bedroom 3	13.81
Bathroom 2	6.57
<hr/>	
Apartment H - net area	158.57
Balcony 1	5.35
Balcony 2	2.51
<hr/>	
Apartment H - Total area	166.43



*GRANDVUE*  
APARTMENTS

# CONTACT US

**SOLE SALES AND MARKETING AGENTS:**

**Arusha Realtors & Advisors Ltd.**

**P.O. Box 249**

**Arusha Tanzania**

**Tel : +255 687 440 044**

**Tel: +255 753 440 044**

**Email: [grandvue@live.com](mailto:grandvue@live.com)**



P.O.Box 421 Arusha, Tanzania  
Cell : +255 774401111  
E-mail: [grandvue@live.com](mailto:grandvue@live.com)  
[www.grandvueapartments.com](http://www.grandvueapartments.com)